

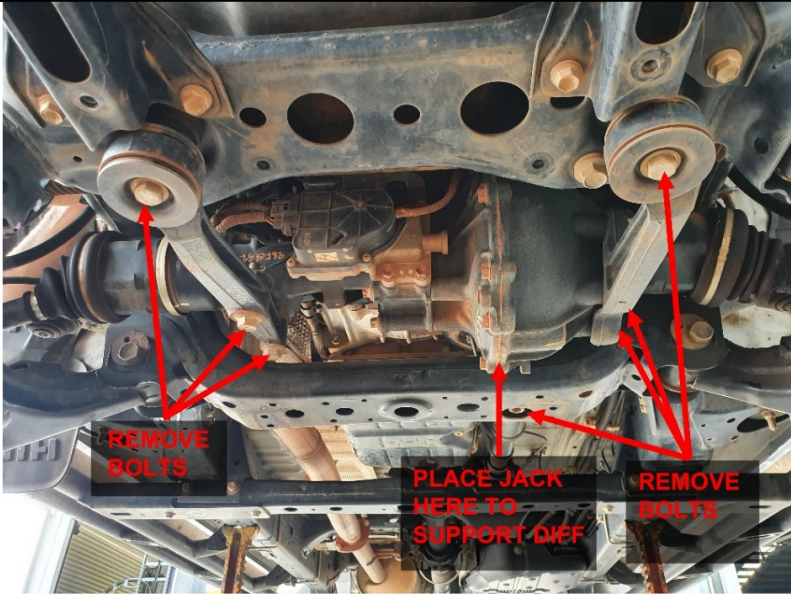
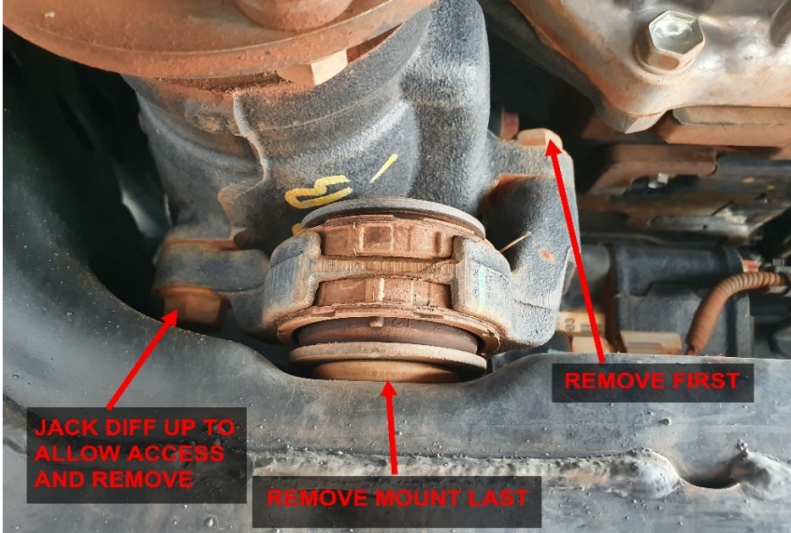
Diff Drop Kit Toyota Hilux Revo Fitting Guide



DD59-538k

Dobinsons diff drop kit drops the diff approximately 35mm and should be used in conjunction with high clearance CV boot kits CV59-554k and CV59-557k, Dobinsons Upper Control arms and shock absorbers with an extended length of 580mm.

Always use the correct PPE and follow all relevant workshop procedures for removal and install of parts.

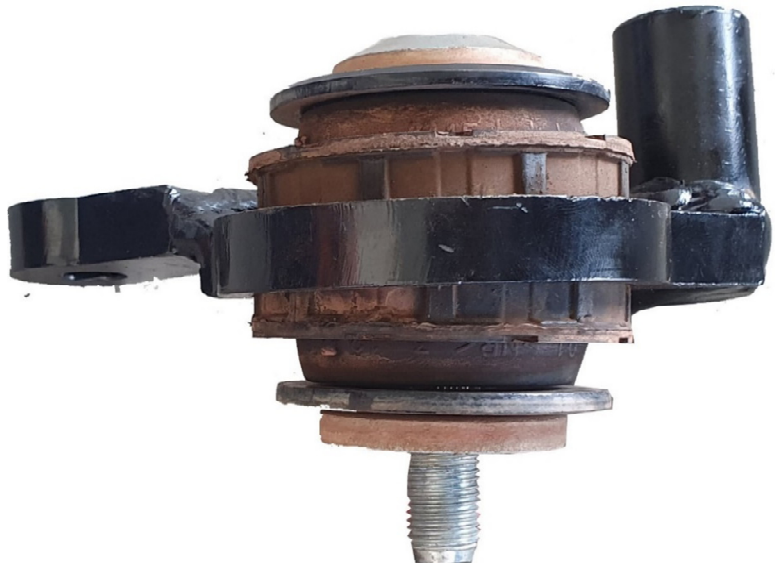
<p>1. Safely Jack the vehicle and support with jack stands or raise on hoist.</p>	
<p>2. Remove the bash plates from the front and under the front diff.</p>	
<p>3. Support the diff with a jack as shown and remove the rear diff mount cross member nut, the 4 bolts on the diff cradle arms, and the 2 front bolts holding the diff cradle to chassis</p>	 <p>REMOVE BOLTS</p> <p>PLACE JACK HERE TO SUPPORT DIFF</p> <p>REMOVE BOLTS</p>
<p>4. Remove the rear right side bolt then Jack the diff up a little to allow access to the left side bolt at the rear diff mount and remove. With the diff still supported by the jack carefully wriggle the mount and diff to remove the rear mount</p>	 <p>JACK DIFF UP TO ALLOW ACCESS AND REMOVE</p> <p>REMOVE MOUNT LAST</p> <p>REMOVE FIRST</p>

5. Support the rear mount on a piece of wood or similar and knock out the centre bolt. Take care not to damage the thread – use can use an old nut with the same thread to help prevent this.



6. Take note of the orientation and order of all the components and remove them from the original mount

7. Install the original bolt, bushes and washers into the new mount as show



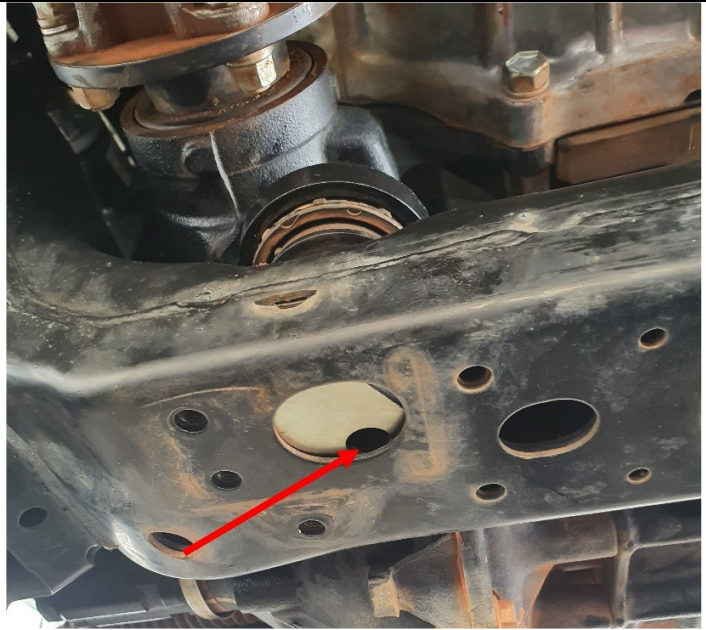
8. Re-install the rear mount back into place. This can be quite difficult and may require a second person– the diff will need to be maneuvered forward quite a lot to allow alignment and all you to install the 2 original rear bolts removed in step 4. Do not install the lower mount yet just install the left and right bolts and tighten.



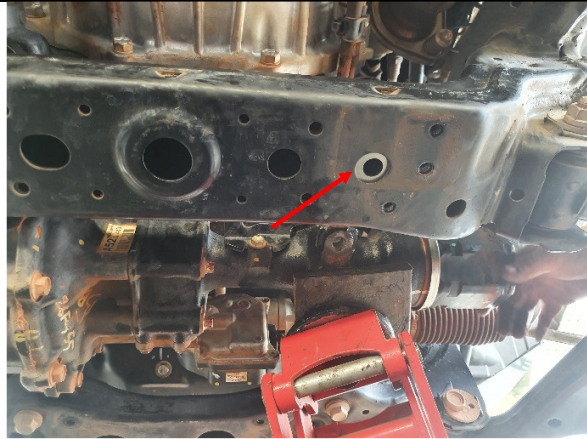
9. Assemble the new left and right cradle arms as shown. Use a hammer to knock the poly bushes into the front of the new left side cradle, and the front and rear of the new right side cradle. Put a small amount of grease and knock the sleeves into the poly bushes ensuring the poly bushes are held against something to prevent them unseating from the arms. You can also do this in a vice



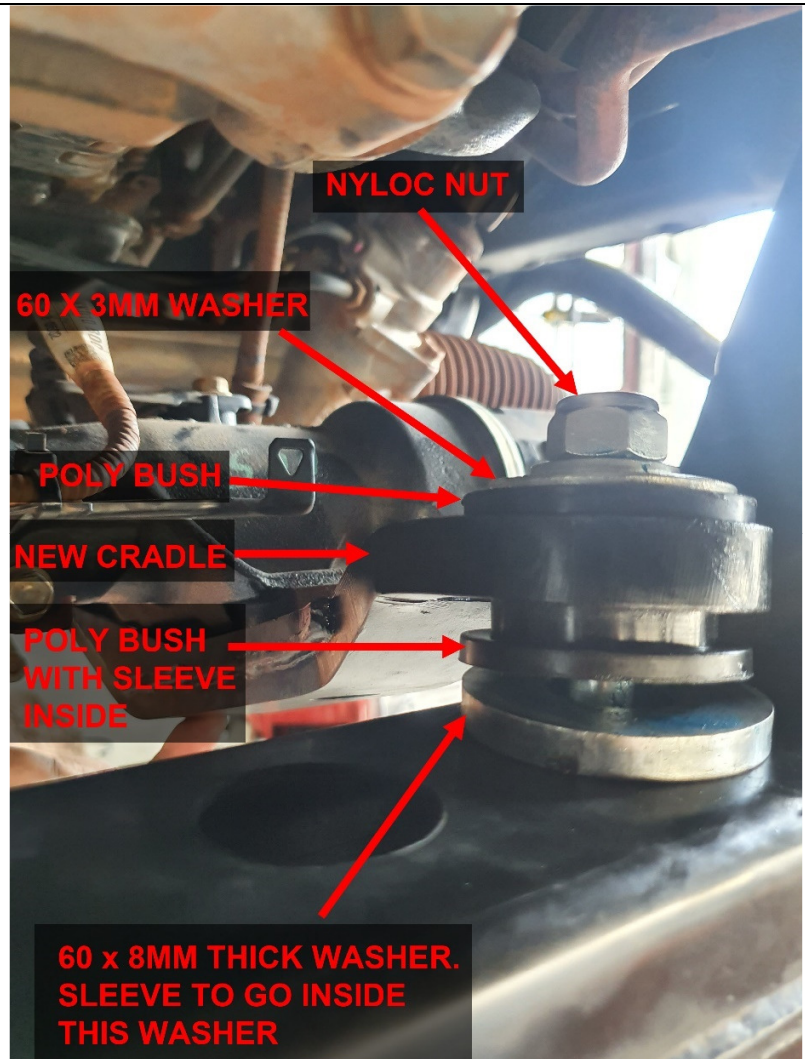
10. Slide the rectangle washer into the crossmember in the large hole – For N80 hilux's this is under the rear mount installed in step 8, and then re-install the OEM nut to the bottom of this rear mount loosely



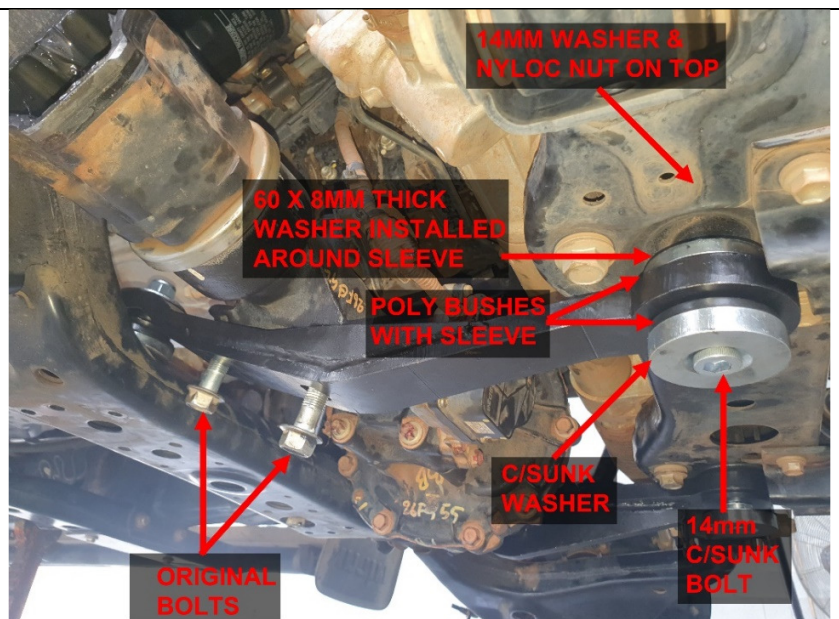
11. Slide the washer over under the right hand hole as shown and install the short cap head bolt supplied



12. Install the new right side cradle to the diff to the bolt installed in the step above. The cradle will only go 1 way with the 2 holes for the diff towards the rear. install in the order as shown ensure that the sleeve goes inside the 60 x 8mm thick washer. Leave loose for now.



13. Install the cradle arm to the diff loosely using the original bolts. Bolt the front of the new cradle arm to the Front original mounting position using the 14mm countersunk bolt inserted into the 14mm countersunk washer, through the poly bushes, mount, sleeve and then put the 60 x 8mm thick spacer washer between the bush and chasses ensuring it goes around the sleeve then install the regular 14mm washer and nyloc nut on top. Leave loose for now



14. Install the new left side mount to the diff using the original bolts. Install the front bolt, washers and spacers in the same orientation as the right side mount. It can be difficult to get the bolts into the diff housing and may require you to lift the right side of the diff upward and wriggle backward and forward.

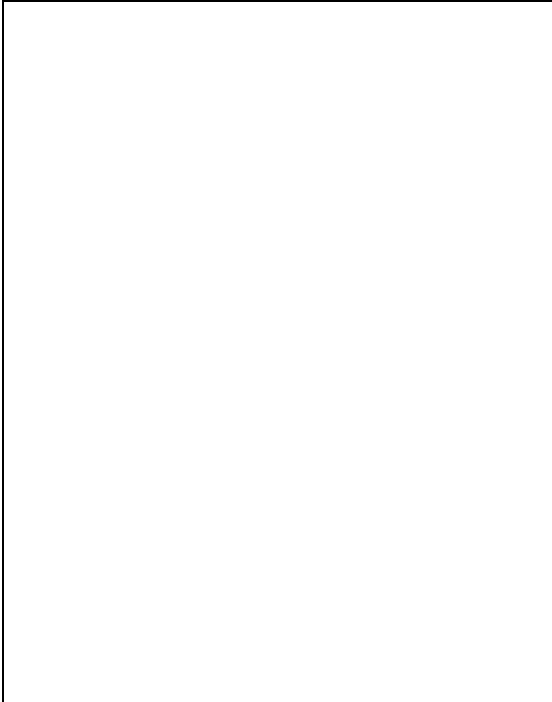


15. Remove the jack and tighten all bolts. The large and small slotted washers supplied are generally not used and provided for customers who wish to raise the rear of the diff slightly to prevent cross member contact.

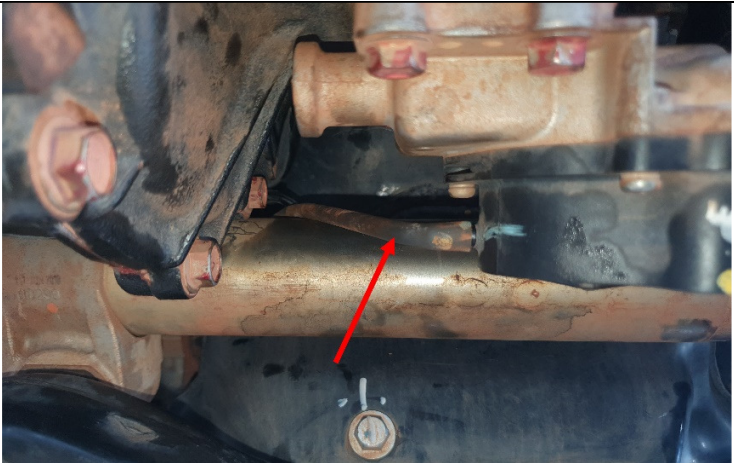
16. At the top of the diff on the left side is a bracket holding the breather hose and 4wd solenoid vacuum hose – this needs to be gently bent down slightly ensuring the hoses do not come off.

17. Check the small breather hose at the top of the diff and slide it to position it evenly between the diff and the hard line.

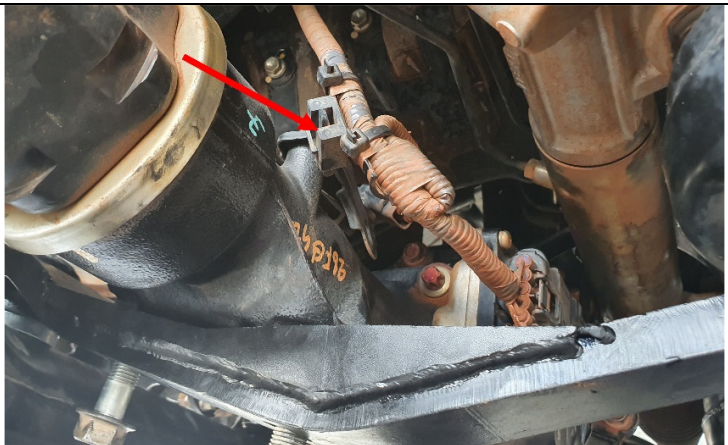




18. Replace the front 4mm i.d. vacuum hose at the front 4wd locking solenoid (for models equipped with this) with the longer hose ensuring it is connected properly at both ends, cable tie both ends with a small zip tie to keep it firm.



19. If required unclip the wiring retainer from the front left side of the diff if it is over stretched – this is recommended.



20. Refit bash plates.

For 2005 to 2015 models the front bash plate requires a single spacer under the front and rear.

The bottom bash plate requires 2 spacers under each front bolt and 1 under the rear. The front of the bash plate needs to be bent up to meet with the front bash plate.
NOTE: The sides may need to be trimmed to clear the c.v's

For 2015 on models the bottom bash plate can have a spacer under the front and rear and the front bash plate can have a spacer under the rear where it meets the front bash plate. It can also have a spacer under the front if required or the front can be left in place and the rear of the front bash plate holes slotted a little with a drill to allow the rear to be spaced down.

