



## Diff Drop FITMENT GUIDE

# VW Amarok Diff Drop kit (not suitable for 2016+ facelift)

**Part Number—  
DDAMA01**

### TOOLS REQUIRED—

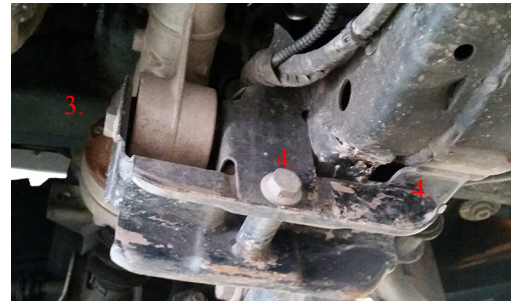
- |                          |                 |
|--------------------------|-----------------|
| • 3/8 RATCHET            | • 16MM SOCKET   |
| • 3/8 LONG EXTENSION BAR | • 18MM SPANNER  |
| • 3/8 UNIVERSAL JOINT    | • 14MM SOCKET   |
| • 18MM SOCKET            | • 19MM SOCKET   |
|                          | • 6MM ALLEN KEY |

Suitable for Volkswagen Amarok lowering diff by 25mm thus reducing the angles CV Joints need to operate on and increasing clearances.

Fitting of this kit involves using a nylon diff mount bush—this may increase the vehicles NVH properties as a result increasing vibration & driveline noise.

### LHR mount

1. Secure the vehicle with park brake applied and wheels chocked.
2. Remove the protection plates from under the vehicle.
3. Remove the LH mount from the vehicle by undoing the bolt through the bushing (no longer required)
4. Remove the bolt from under the chassis and the nut and bolt through the mount—retain for refitting later.
5. Place new mount in place, pass the countersunk 100mm bolt through the back of the new mount with countersunk hole - through the bushing, use flat washer with nyloc nut as pictured.
6. Loosely re-install the 2 factory bolts to hold the mount in place as pictured, take note of bolt orientation with nut outward.



### RHR mount

1. Undo the 3 mounting bolts—2 down into chassis bracket and 1 x bush mount, keeping all bolts for re-fitment.
2. Remove the mount from the chassis, (easiest seems to be to roll the mount over the steering shaft up through the wheel arch)
3. Replace with new dropped mount—install is the opposite, enter through the wheel arch and roll over steering shaft, firstly reuse the 2 mounting bolts to the chassis, once fitted then use the original long 12mm bolt to mount the bushing, with the supplied M12x1.5P Nyloc fitted to the original bolt— Keep all bolts loose at this stage.



**This Diff drop kit is not suitable for fitment to 2016+ facelift models**

**RECOMMENDED FOR INSTALLATION BY A SPECIALIST 4WD MECHANIC**



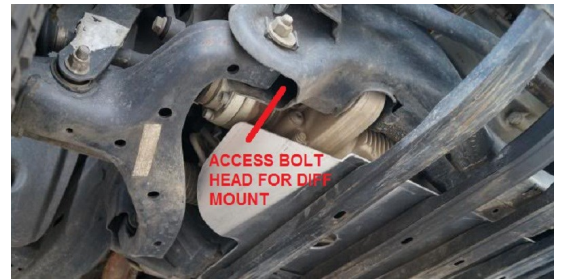
## Diff Drop FITMENT GUIDE

# VW Amarok Diff Drop kit

## Part Number— DDAMA01

### RHF mount

1. Support the diff with an appropriate stand.
2. Access the bolt holding the front diff bushing mount through the lower A arm mount—you will need universal joint and extension bar for this bolt, 3/8 drive recommended—Once undone you may require long nose pliers or similar to remove the bolt from the mount, you can leave the bolt in the arm.
3. Once the bolt is removed lower the diff from it's mount until the bush is clear.
4. Next you will need to remove the OE bush from the mount, if you have a mini press this would be the easiest, being careful not to damage the diff mount.
5. Once removed ensure the mount is clean and clear of any defects.
6. Align the offset hole in the bush so it's at 12 o'clock, apply lubricant to the bush (with some CRC or similar), and install the bush with the use of a mini press, or G clamp as shown until the face of the bush has pulled up against the diff mount.
7. Once the bush is installed raise the mount and reinstall bolt.
8. Once completed go over all bolts and tighten to relevant specs, once everything is tight reinstall the bash plates.



### Bash Plates

1. Refit the bash plates, the 4 rear most mounts require a spacer, there a 4 x 4mm spacers supplied in the kit to provide clearance to the bash plate when refitted.



### Kit Contents—

- 1 X RHR DIFF MOUNT
- 1 X LHF DIFF MOUNT
- 1 X NYLON OFFSET BUSH
- 1 X M12X1.5P NYLOC NUT
- 5 X M10 FLAT WASHER
- 1 X M10 X 1.5P NYLOC NUT
- 1 X M10 X 1.5P X 100MM COUNTERSUNK HEX HEAD BOLT

Once all components have been installed in the prescribed order, tighten all bolts to recommended torque values, re-install the bash plates. Now you have lowered the front diff mount, the bash plates will require spacing.

**This Diff drop kit is not suitable for fitment to 2016+ facelift models**