



Toyota Landcruiser 79 Dual Cab MY2012 on Scout Roof Rack

IMPORTANT! – READ BEFORE INSTALLATION

- When installed in accordance with these instructions, the front protection bar does not affect the operation of the vehicles SRS airbags.
- This product must be installed exactly as per these instructions using only hardware supplied.
- Take a few moments to read instructions thoroughly before beginning work.
- In the event of damage to any bar component please contact OFFROAD ANIMAL to arrange repair/replacement of components.
- Do not use this product for any vehicle make or model other than that specified on these instructions.
- Do not remove labels from this product.
- This product and its fixings must not be modified in any way unless stated in these fitting instructions.
- The installation of this product is recommended for trained personnel.
- These instructions are correct at time of publication. OFFROAD ANIMAL cannot be held responsible for the impact of any changes subsequently made by the vehicle manufacturer. If you find something has changed, please contact us to let us know!
- During installation it is the duty of the installer to check correct operation/clearances of all components.
- If Instructions are to be printed for reference in the workshop, it is recommended that they are printed in colour, for best legibility.

PARTS LISTING

IMPORTANT: Check all parts are present before beginning work! Contact OFFROAD ANIMAL if something is missing.

Main Parts – In the Box

Qty	Part Number	Description	Image
5	E-0005-1300	Scout Roof Rack - Cross Bar Extrusion 1300MM	
1	B-1178L	LC79 Scout Rack Side Rail	
1	B-1178R	LC79 Scout Rack Side Rail	
1	B-1179	LC79 Scout Rack Front Panel	
1	B-1180	LC79 Scout Rack Wind Deflector	
6	B-1186	LC79 Scout Rack Foot	
6	B-1187	LC79 Scout Rack Clamp	
6	UC-14-3-90MM	U CHANNEL RUBBER 90MM LONG	
6	PW-P-14X9-90	Pinch Weld - Plain 14X9MM, Rubber, 90mm Length	



Small Parts – Contained in Small Parts Kit Bag

QTY.	PART NO.	DESCRIPTION
12	M8 Cage nut	NUT, CAGE, M8X1.25 ZINC PLATE
12	M8 FLAT WASHER- BLACK ZINC	M8 FLAT WASHER, 16.5x8.4x1.2, ISO4042 ZnNi BLACK PASSIVATED FINISH
12	M8 X 35 BHCS BZP	SCREW, BUTTON HEAD CAP, M8X35X1.25 BLACK ZP
52	M8 HD FLAT WASHER - BZP	M8 FLAT WASHER - High Tensile 19x8x2mm, ISO4042 ZnNi BLACK PASSIVATED FINISH
20	M8 NUT	Hex Nut, M8x1.25 G8.8 ZP
10	M8 X 16 BHCS BZP	SCREW, BUTTON HEAD CAP, M8X16X1.25 GR12.9, ISO4042 ZnNi BLACK PASSIVATED FINISH
10	M8 X 12 BHCS BZP	SCREW, BUTTON HEAD CAP, M8X12X1.25 GR12.9, ISO4042 ZnNi BLACK PASSIVATED FINISH
32	M8 X 20 BHCS BLACK ZINC	SCREW, BUTTON HEAD CAP, M8X20X1.25, ISO4042 ZnNi BLACK PASSIVATED FINISH
12	M8 FLANGE NUT	Flange Nut, M8x1.25 G8.8 ZP
16	M6 FLAT WASHER BLACK ZINC	M6 Flat Washer, 12x6.1x1, ISO4042 ZnNi BLACK PASSIVATED FINISH
10	M6x16 BHCS BLACK ZINC	SCREW, BUTTON HEAD CAP, M6X16X1 GR12.9, ISO4042 ZnNi BLACK PASSIVATED FINISH
6	M6 FLANGE NUT	Flange Nut, M6x1 G8.8 ZP
6	M6x12 BHCS BLACK ZINC	SCREW, BUTTON HEAD CAP, M6X12X1 GR12.9, ISO4042 ZnNi BLACK PASSIVATED FINISH



TOOLS REQUIRED

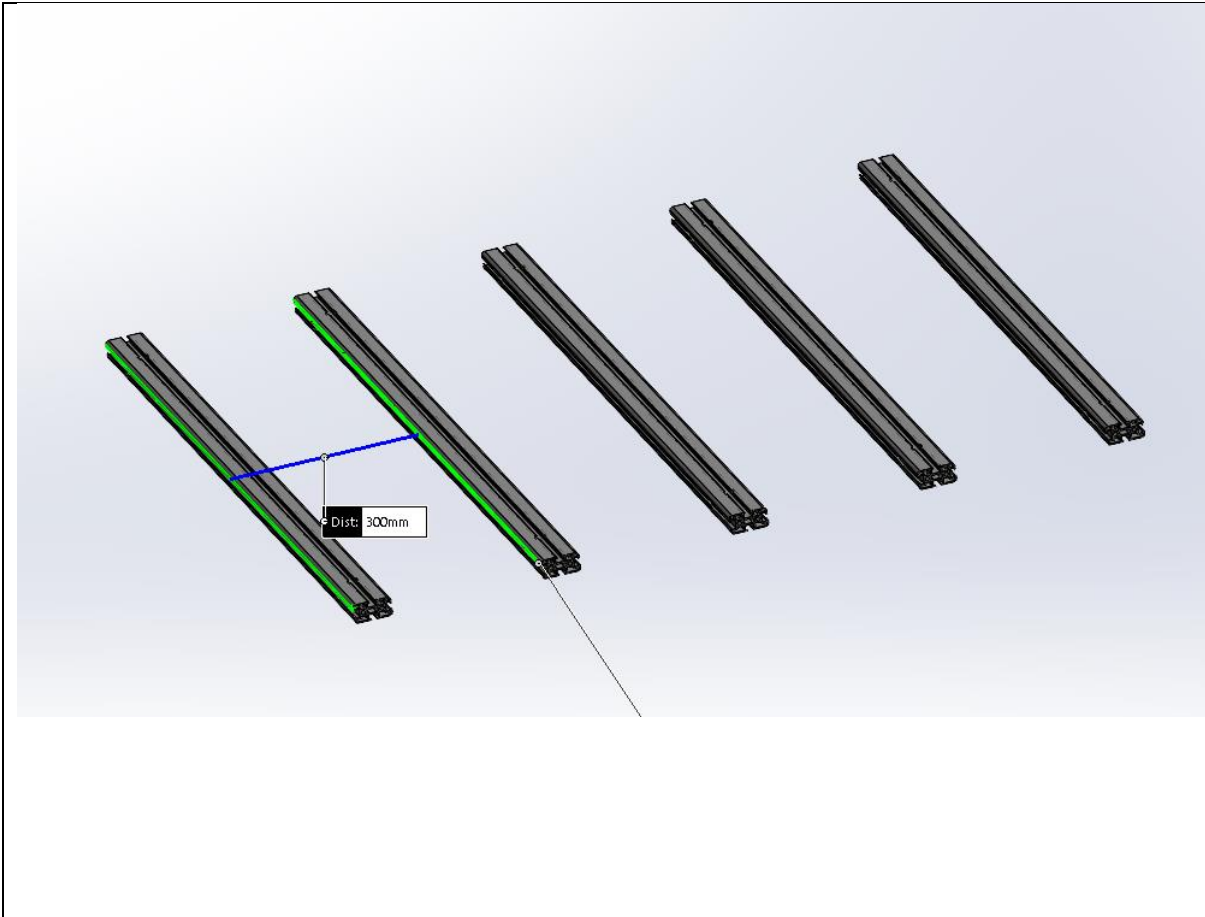
The following tools will be required to install the product. Note Extra Tools will be required for fitment of track kit. Refer to track kit

Hand Tools	Power Tools	Workshop Supplies
Metric Socket Set 8-19mm Socket Extension Bar Metric Spanner Set 10-19mm Hex (Allen) Key Set 4-6mm Torque Wrench capable of Low Torque Settings		Soft Blanket

WORKSHOP SAFETY

It is the responsibility of the installer to always complete works in a safe manner. Make sure the following safety equipment is available and precautions are observed whilst fitting this product.

<p>Hearing Protection</p> 	<p>Always wear ear protection when using power tools.</p>
<p>Eye Protection</p> 	<p>Ensure eye protection is always worn when cutting or drilling.</p>
<p>Manual Handling</p> 	<p>Do not attempt to lift bar assemblies or rock sliders on your own.</p> <p>Always use two people to lift or use mechanical Lifting aid such as hydraulic lifting trolley.</p>
<p>Vehicle Support</p> 	<p>Always ensure vehicle is properly supported when working on it. Do not attempt to fit products whilst suspension work is being carried out. Do not work under a vehicle supported only by a jack.</p>



1. Assemble the roof rack. Start by setting out the 5 extrusions on a table or panel stand. Position them so they sit approximately 300mm apart.
2. **IMPORTANT ASSEMBLY NOTE:** For **ALL FASTENERS** during the assembly process leave finger tight until tightening step.

TOOLS REQUIRED

FASTENERS



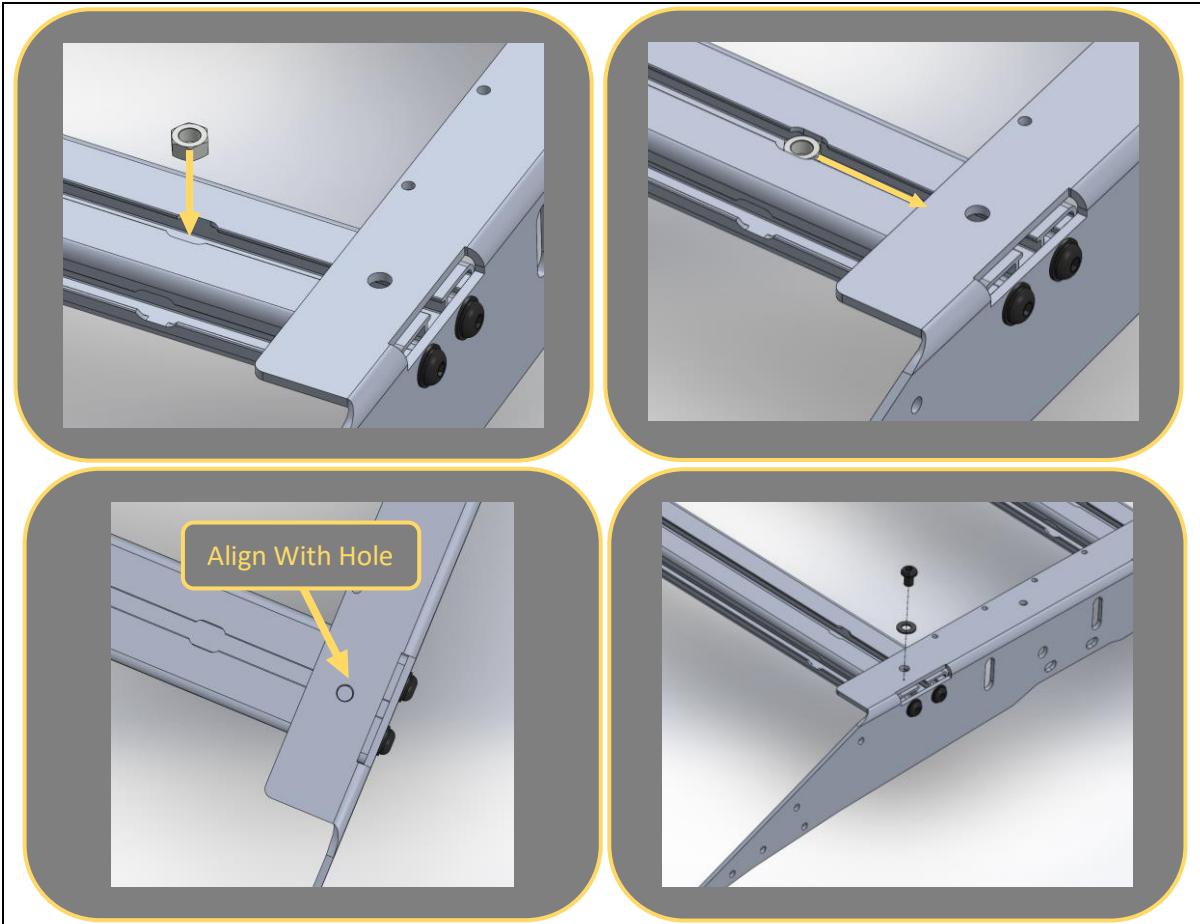
3. Fit the side rail to the extrusion,

This is easiest to do when the ends of the extrusions are hanging over the edge of a table / workbench.
4. Secure using M8x20 Button Head bolts through the side face into the Tapped holes on the side face of the extrusion.
5. Complete steps for both side rails.

TOOLS REQUIRED
5MM Hex Key

FASTENERS

- 10x M8x20 Button head bolt.
- 10x M8 Flat Washer



6. Insert M8 Nut into each track for securing top face of side rail.
7. Drop nut into slot in extrusion, then slide nut sideways in slot and align with hole in the side rail.
8. Secure with M8x16 Bolt + Flat Washer.
9. Complete top bolt fitment for other side of rail.

TOOLS REQUIRED
5MM Allen Key

FASTENERS
5x M8 Nuts
5x M8x16 Button head bolt
5x M8 Black Washer

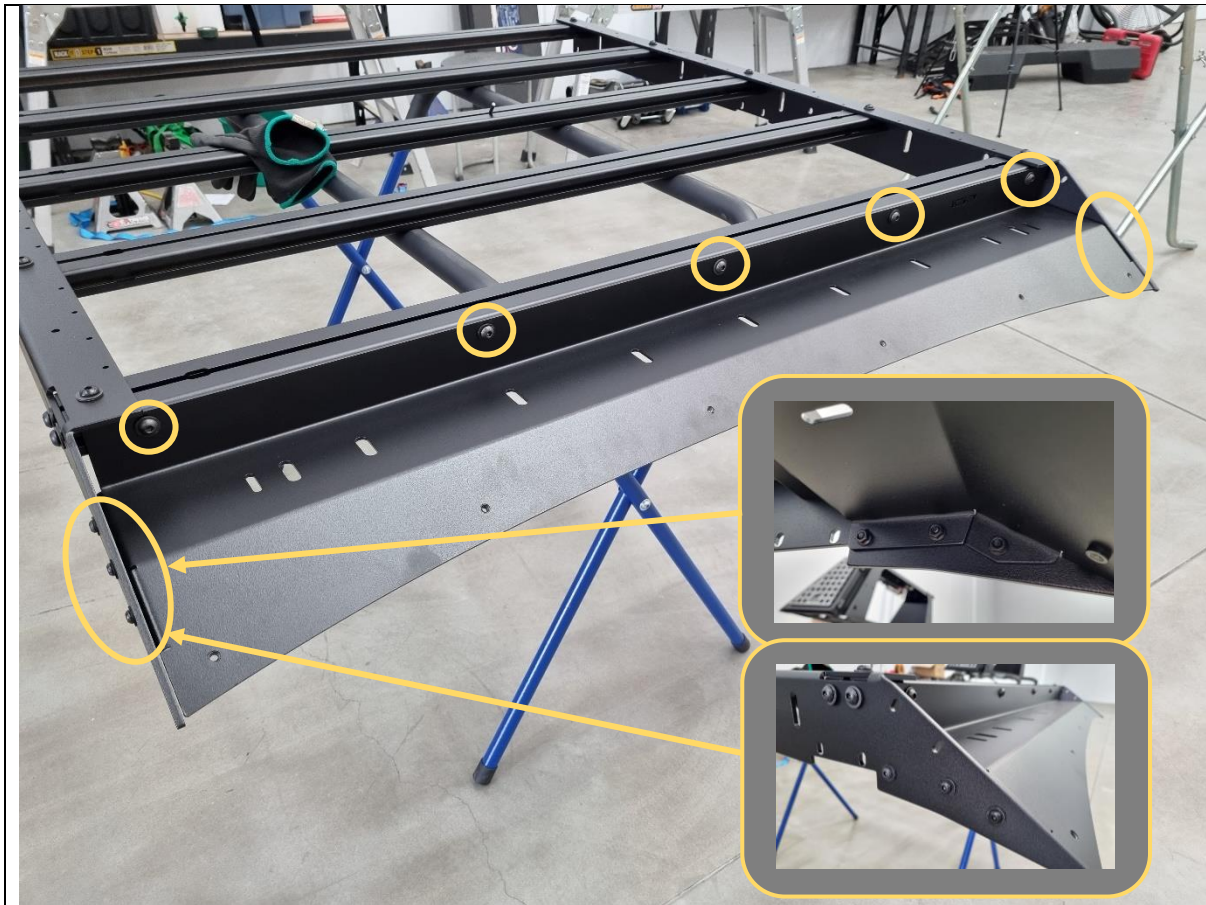
Per Side



10. Insert 5x M8 nuts into the front slot of the front extrusion.
11. Using the hole positions in the vertical face of the front panel as a guide, use a screwdriver to move nuts into correct positions. Gravity should hold the nut in position.
12. Position 5x M8x12 Button head and M8 Flat washers on the rack within easy reach for the next step.

TOOLS REQUIRED
Screwdriver

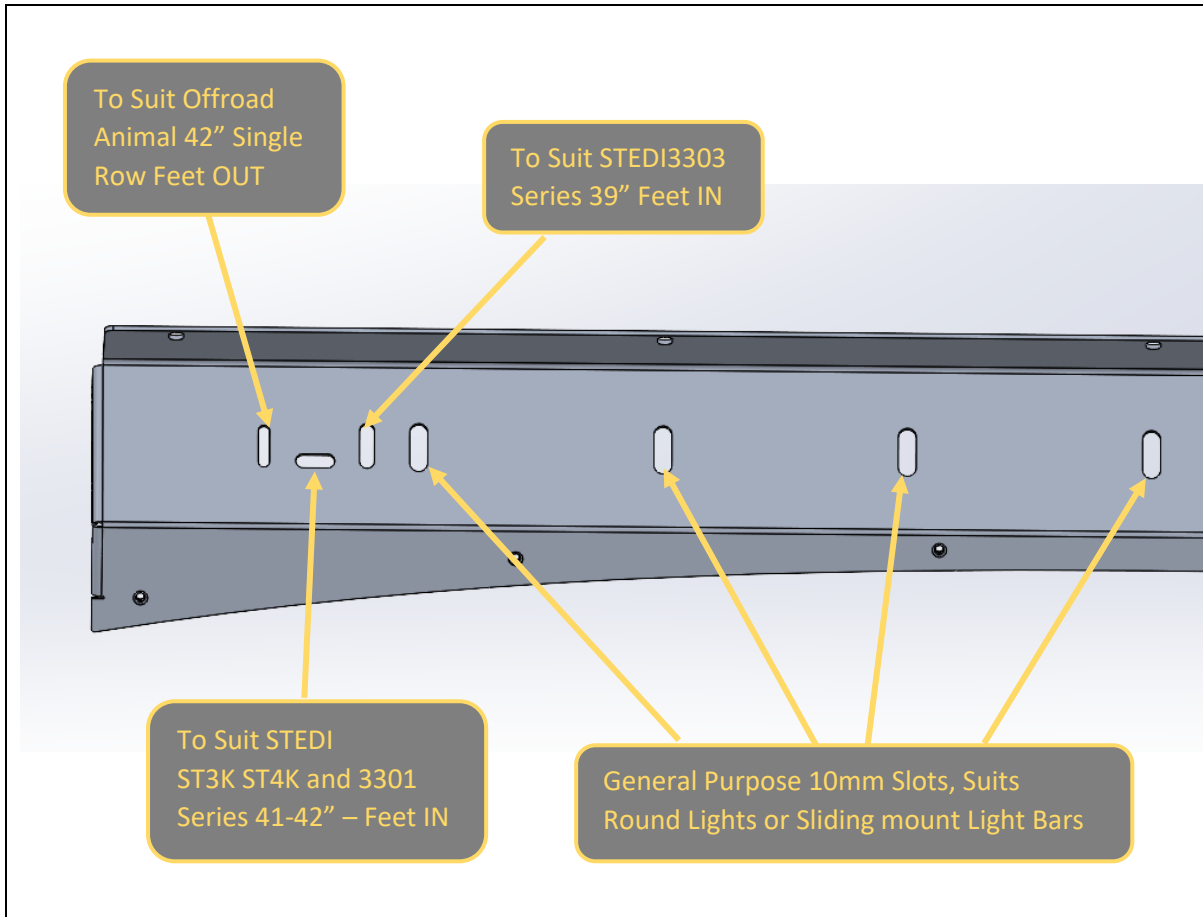
FASTENERS
5x M8 Nuts



13. Fit the Front panel to the rack assembly. Secure to the pre-placed nuts in the front extrusion using the M8x12 Button head bolts and flat washers.
14. Next, Secure the Front panel to the side arm using 3x M6x16 Button head bolts, flat washers, and Flange nuts per side
15. **Tighten** the 5x M8 Button head screws securing front panel to the extrusion. Leave other bolts finger tight.

TOOLS REQUIRED
5MM Hex Key

- FASTENERS**
- 5x M8X12 Button Head Bolt
 - 5x M8 Flat Washer
 - 6x M6X16 Button Head Bolt
 - 6x M6 Flat Washer
 - 6x M6 Flange Nut Washer



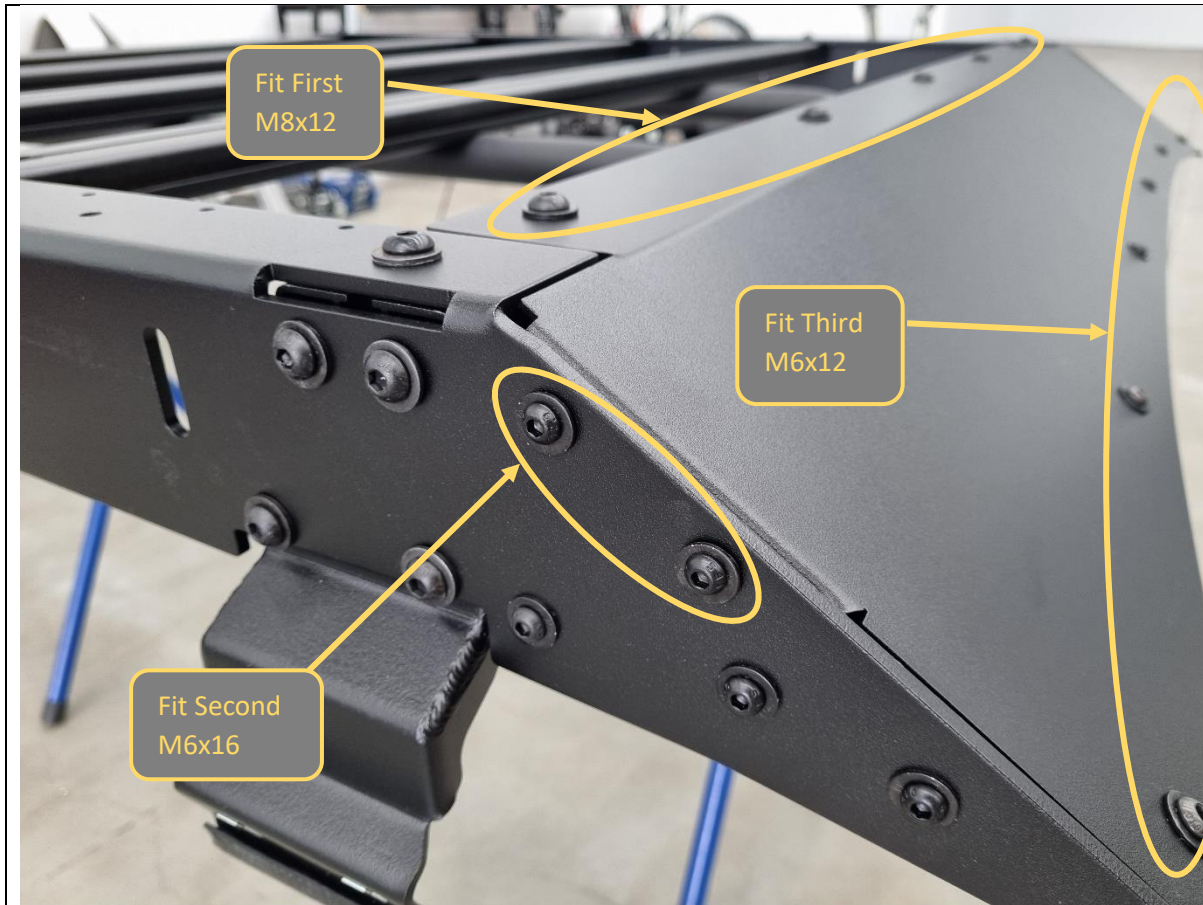
<p>16. If fitting a light bar or other lights to the front of rack – do so now. Refer to above image to identify appropriate slots to use.</p> <p>17. If lights are fitted skip to step 24.</p>	<p>TOOLS REQUIRED</p>
	<p>FASTENERS</p> <p>Fasteners Supplied with Lights</p>



18. If not fitting lights, prepare for fitment of wind deflector by positioning 5x M8 nuts into the top slot of the front extrusion.
19. Using the hole positions in the top face of the wind deflector as a guide, use a screwdriver to move nuts into correct positions. Gravity should hold the nut in position.
20. Position 5x M8x12 Button head and M8 Flat washers on the rack within easy reach for the next step.

TOOLS REQUIRED

FASTENERS
5x M8 Nuts



21. Fit the wind deflector to the rack. Secure to the pre-placed nuts in the front extrusion using the M8x12 Button head bolts and flat washers.
22. Next, Secure the Wind deflector to the side arm using 2x M6x16 Button head bolts, flat washers, into captive nuts on the wind deflector.
23. Finally, Secure the Wind deflector to the Front Panel using 6x M6x12 Button head bolts, flat washers, into captive nuts on the Front Panel.

TOOLS REQUIRED

FASTENERS

- 5x M8X12 Button Head Bolt
- 5x M8 Flat Washer
- 4x M6X16 Button Head Bolt
- 6x M6X12 Button Head Bolt
- 10x M6 Flat Washer



24. Fit M8 Cage nuts to the Rack feet. The nuts should sit as per the image shown above. A flat blade screwdriver can assist with installation.
25. Fit the pinch weld rubber to the bottom of the feet. Ensure to apply sufficient pressure to properly seat the pinch weld on the part. This will help prevent excessive settling during clamp tightening.
26. Complete these steps for all 6 rack feet.

TOOLS REQUIRED

Flat Blade Screwdriver

FASTENERS

2x M8 Cage Nut
1x Pinch weld Rubber 90mm
Per foot



27. Fit the roof rack feet to the rack using M8x20 Button head bolts, M8 Flat washers, and M8 Flange Nuts. Feet should sit on the back side of the side rail.
28. Complete foot fitting for all 6x foot locations. Leave bolts finger tight at this stage.

TOOLS REQUIRED

FASTENERS

- 12x M8x20 Button head bolts
- 12x M8 Flat washers
- 12x M8 Flange Nuts



29. Now is time to **TIGHTEN ALL** bolts securing the components of the rack assembly together.
30. First **Tighten** all horizontal bolts securing the side arms to the Extrusions and front panel / wind deflectors. Complete on both sides
31. Next **Tighten** all vertical bolts.
32. Work methodically from front to back to ensure no bolts are missed.
33. Leave the foot bolts finger tight.

TOOLS REQUIRED

4mm Hex Key
5mm Hex Key

FASTENERS

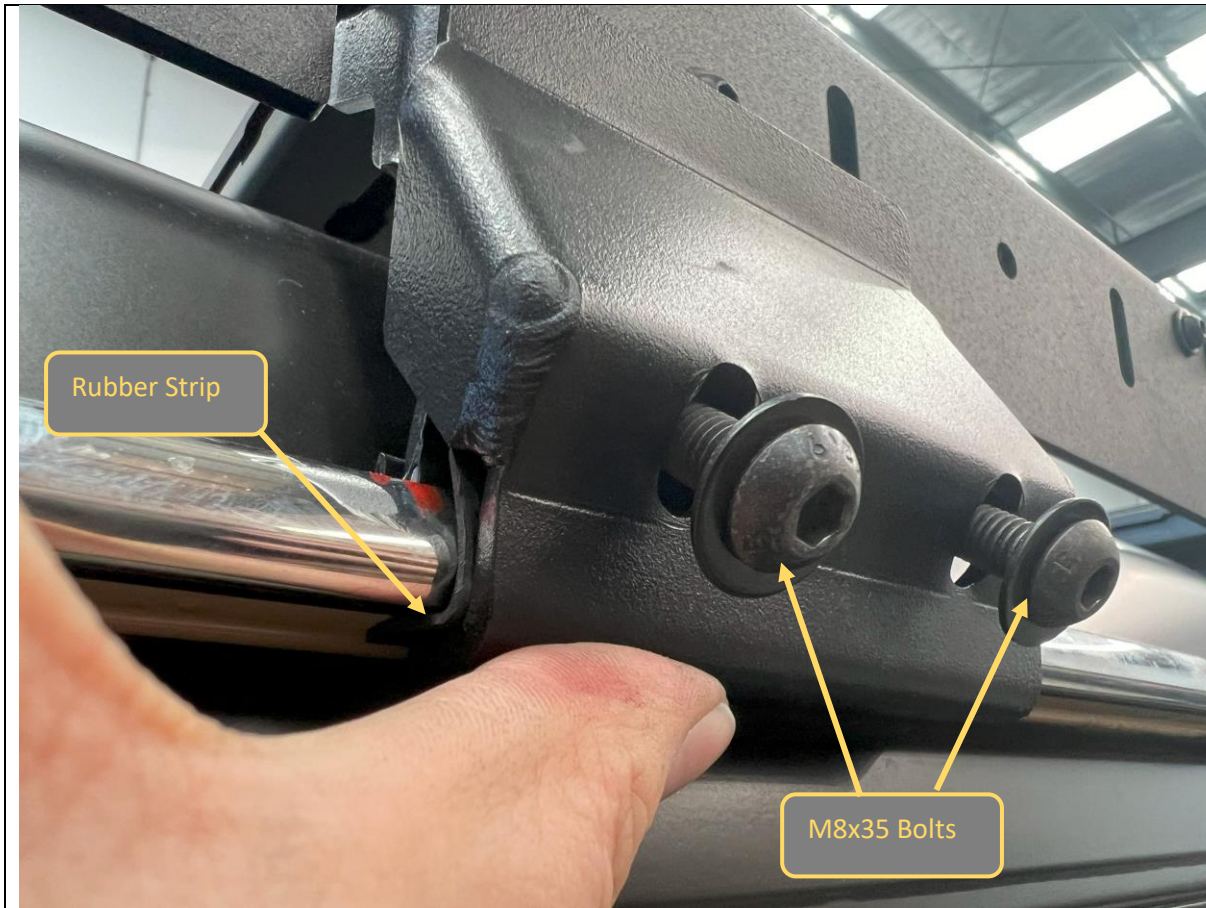


34. With assistance from another person, lift the rack onto the vehicle.
35. Position rack such that the rearmost foot sits in line with the rear door – C Pillar joint.
36. Adjust the height of the front of the rack to sit with approximately 10mm clearance to roof then, after ensuring all feet are contacting the gutter, **Tighten** the foot to side arm bolts.

TOOLS REQUIRED

5MM Hex Key

FASTENERS



37. Fit the clamps to M8 Cage nuts in the feet, using M8x35 Button head bolts and M8 Flat Washers.

38. Ensure that the small rubber strip is positioned in between the strap and the underside of the roof gutter.

We found it is easiest to hold the strip against the strap as it is offered up to the bottom of the gutter from below.

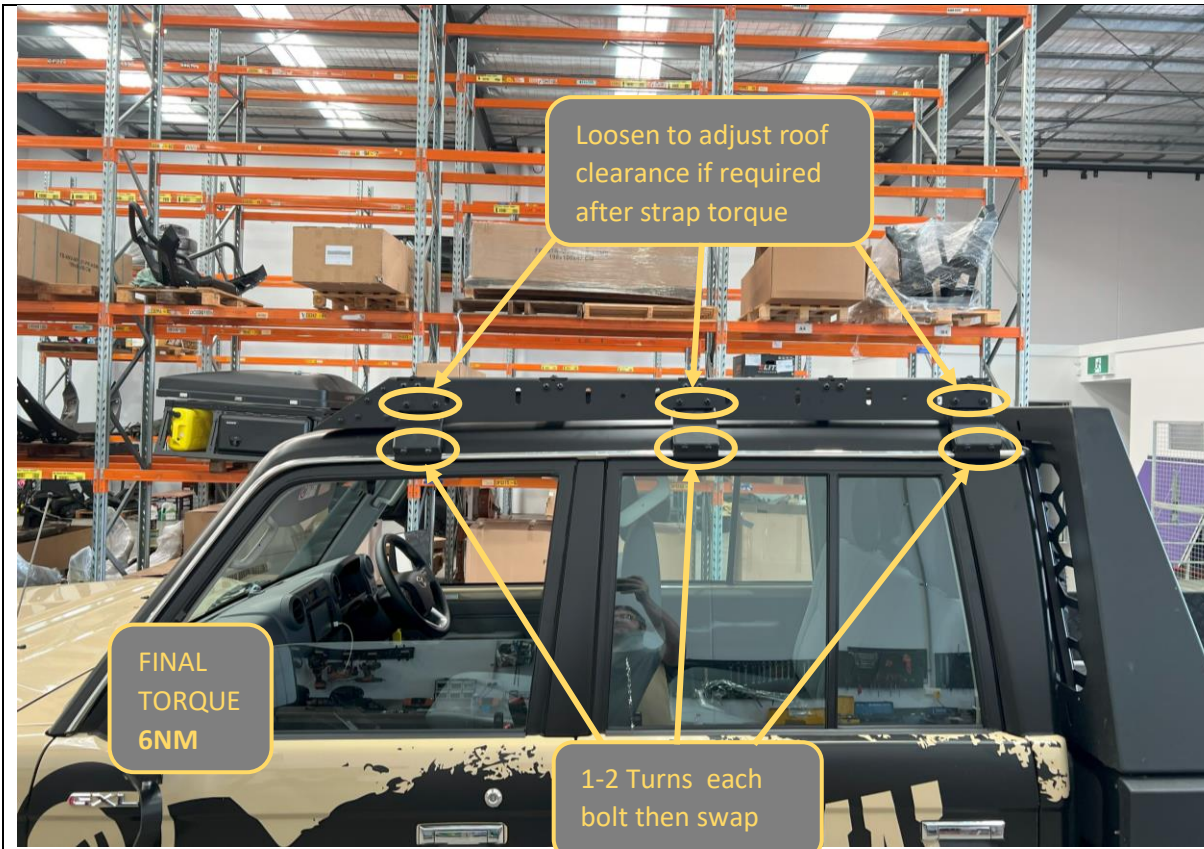
39. Run bolts in finger tight.

40. Complete strap fitting for all 6x Feet

TOOLS REQUIRED

FASTENERS

12xM8x35 Button Head Bolt
12xM8 Flat washer
6x Rubber Strip



41. Carefully and progressively tighten the clamp bolts. The two bolts on each clamp need to be tightened together. Complete 1-2 turns then swap on each fastener.
42. Progressively work around the rack when tightening, partially tightening each foot then swapping to the next ones.
43. Continue tightening in this sequence using Torque Wrench until **6NM** torque is achieved on all bolts.
44. Clamp tightening will pull the rack towards the roof as the rack settles on the rubber mounts. If clearance to roof is now too close at the front panel, loosen Foot to side arm bolts and re-align front of rack to achieve better clearance. Re tighten once adjusted.
45. If the position is adjusted re-check strap bolt torque afterwards.

TOOLS REQUIRED

Torque Wrench
5mm Hex Key Socket

FASTENERS



46. Double Check all Fasteners are tight.

47. With That you are done! Head Bush and Enjoy your new rack!

For contact details see www.offroadanimal.com