



TOYOTA LANDCRUISER 300 SERIES MY 2022 ON ROCK SLIDERS

IMPORTANT! – READ BEFORE INSTALLATION

- When installed in accordance with these instructions, the Rock Sliders do not affect the operation of the vehicles SRS airbags.
- This product must be installed exactly as per these instructions using only hardware supplied.
- Take a few moments to read instructions thoroughly before beginning work.
- In the event of damage to any bar component please contact OFFROAD ANIMAL to arrange repair/replacement of components.
- Do not use this product for any vehicle make or model other than that specified on these instructions.
- Do not remove labels from this product.
- This product and its fixings must not be modified in any way unless stated in these fitting instructions.
- The installation of this product is recommended for trained personnel.
- These instructions are correct at time of publication. OFFROAD ANIMAL cannot be held responsible for the impact of any changes subsequently made by the vehicle manufacturer. If you find something has changed please contact us to let us know!
- During installation it is the duty of the installer to check correct operation/clearances of all components.
- If Instructions are to be printed for reference in the workshop, it is recommended that they are printed in colour, for best legibility.
- Fitting time estimated 1-2 hours

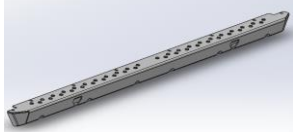
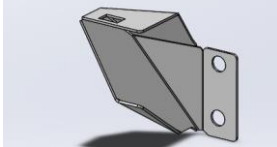
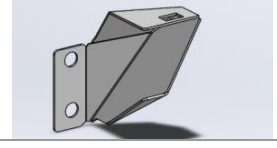
PARTS LISTING

IMPORTANT: Check all parts are present before beginning work! Contact OFFROAD ANIMAL if something is missing.

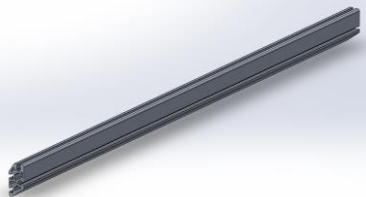
Bracket Kit Parts – In the Box

Qty	Part Number	Description	Image
1	RS-TLC-300-22-ASM2R	Toyota Landcruiser 300 Series - Rock Slider Front Mount Assy RHS	
1	RS-TLC-300-22-ASM2L	Toyota Landcruiser 300 Series - Rock Slider Front Mount Assy LHS	
2	RS-TLC-300-22-ASM1	Toyota Landcruiser 300 Series - Rock Slider Rear Assy	
1	B-0694	Toyota LC300 - Mount Shim 2mm	
1	T-0046	LC300 Slider Front Mount Crush Tube	
1	RS-TLC-300-22-ASM5	LC300 Slider Crossmember Nut Plate Assembly	

Step Kit Parts – In the Box

Qty	Part Number	Description	Image
2	B-0224	Slider Step - 1500 Extrusion	
2	B-0306L	Slider End Cap - Stub Nose	
2	B-0306R	Slider End Cap - Stub Nose	

Step Kit Parts – In the Box

Qty	Part Number	Description	Image
2	E-0002-1500	Slider extrusion -1500MM	

Bracket Kit Small Parts – Contained in Small Parts Kit Bag

Qty	Part Number	Description
2	NP-COM-M10-190-ASM0	M10 LOLLYPOP NUT PLATE 190MM LONG
6	M12 FLAT WASHER	M12 FW
2	M10 X 40	Bolt Hex, M10X40X1.5, GR8.8 ZP
6	M12X120	Bolt Hex, M12X120x1.75, GR8.8 ZP
6	M12 FLANGE NUT	Flange Nut, M12x1.75 G8.8 ZP
2	M12 FW LHD	M12 FW Large Heavy Duty
2	M10 Flat Washer	M10 FW
2	M12X30	Bolt Hex, M12X30x1.75, GR8.8 ZP
16	M10 FLANGE NUT	Flange Nut, M10x1.5 G8.8 ZP
16	M10 x 25	Bolt Hex, M10X25x[1.5], GR8.8 ZP

Step Kit Small Parts – Contained in Small Parts Kit Bag

Qty	Part Number	Description
24	M8 FLAT WASHER- BLACK ZINC	M8 FW- BLACK ZINC
24	M8 NUT	Hex Nut, M8x1.25 G8.8 ZP
12	M8 X 20 BHCS BLACK ZINC	SCREW, BUTTON HEAD CAP, M8X20X1.25 BLACK ZP
12	M8X20 CAP SCREW	CAP SCREW, M8X20X1.25 GR10.9 ZP
4	M6 FLAT WASHER BLACK ZINC	M6 FW BLACK ZP
4	M6CN3MM	CAGE NUT M6x2.6-3.5
4	M6x16 BHCS BLACK ZINC	SCREW, BUTTON HEAD CAP, M6X16X1 GR12.9 BLACK ZP
8	M10X15 BHCS	SCREW, BUTTON HEAD CAP, M10X16X1.5 GR12.9 ZP
8	M10 NUT	Hex Nut, M10x1.5 G8.8 ZP
8	M10 Flat Washer	M10 FW

TOOLS REQUIRED

The following tools will be required to install the product.

Hand Tools	Power Tools	Workshop Equipment
Metric Socket Set 8-19mm Socket Extension Bar Metric Spanner Set 10-19mm Hex (Allen) Key Set 4-6mm Flat Blade Screwdriver set Phillips Head Screwdriver set Utility Knife Side Cutters Pliers	Electric/Air Impact Driver (Optional)	Lift Trolley

WORKSHOP SAFETY

It is the responsibility of the installer to always complete works in a safe manner. Make sure the following safety equipment is available and precautions are observed whilst fitting this product.

<p>Hearing Protection</p> 	<p>Always wear ear protection when using power tools.</p>
<p>Eye Protection</p> 	<p>Ensure eye protection is always worn when cutting or drilling.</p>
<p>Manual Handling</p> 	<p>Do not attempt to lift bar assemblies or rock sliders on your own.</p> <p>Always use two people to lift or use mechanical Lifting aid such as hydraulic lifting trolley.</p>
<p>Vehicle Support</p> 	<p>Always ensure vehicle is properly supported when working on it. Do not attempt to fit products whilst suspension work is being carried out. Do not work under a vehicle supported only by a jack.</p>

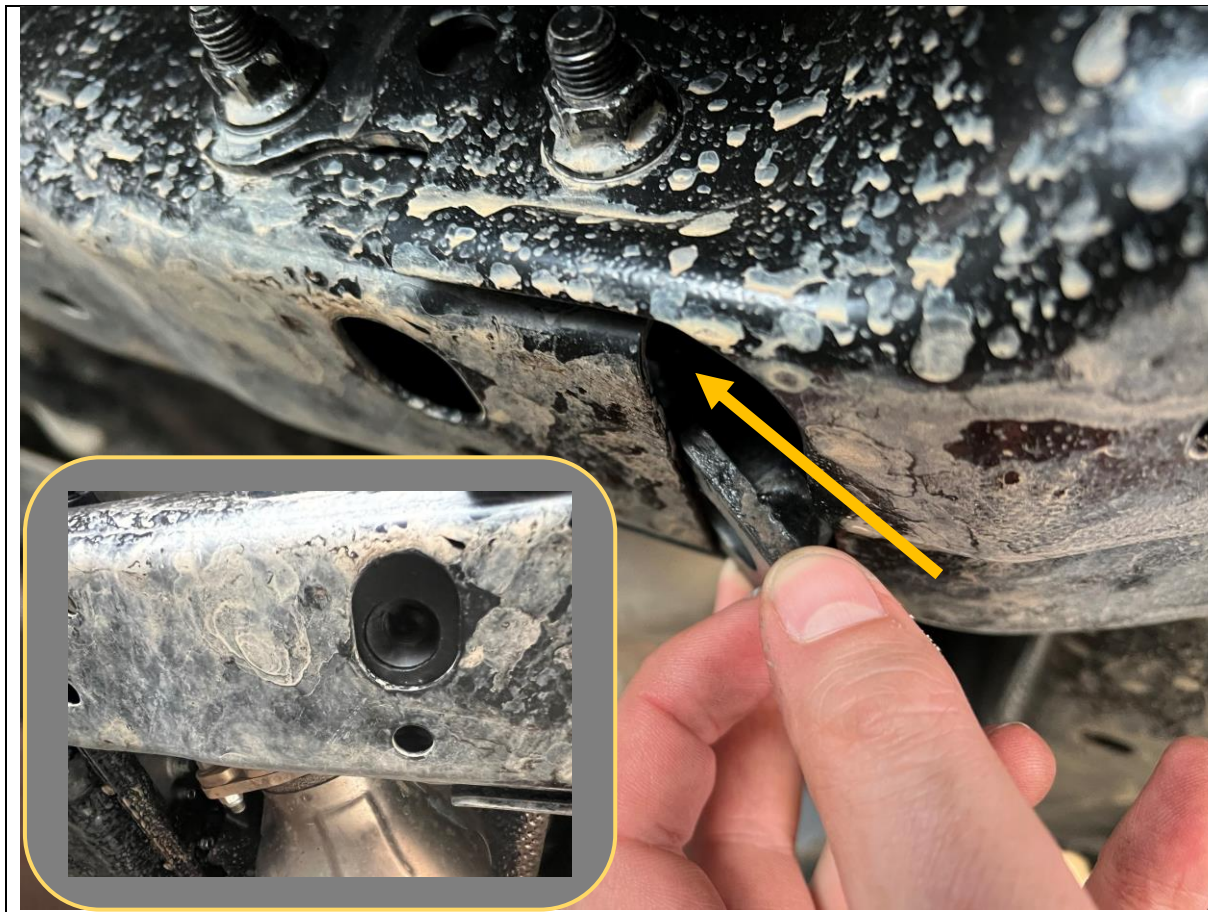


2x Bolts 3x Places

1. Remove Factory side steps if fitted by removing the 6x Bolts (2 Per mount) securing them to the body using a 12mm socket.
2. Discard Factory steps and bolts.

TOOLS REQUIRED
12mm socket

FASTENERS
6x Factory Flange head Bolts (per side)

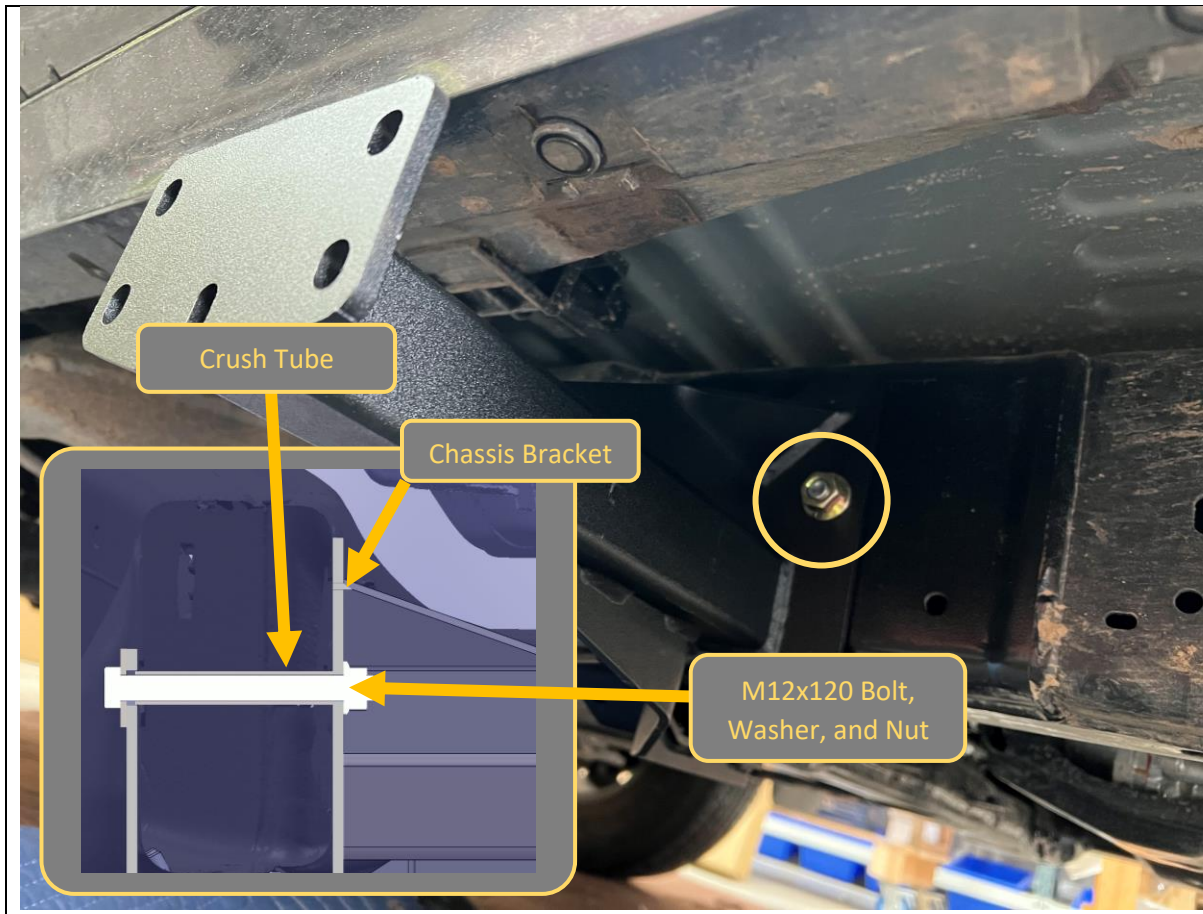


3. Run M12 bolt through both large M12 nut plates to ensure the thread runs freely. Clear with Tap if thread is contaminated.
4. Place large M12 nut plate in position inside the crossmember, adjacent to the front mount location. The nut plate thread should sit within the large oval cutout in the bottom of the crossmember as shown.
5. The nut plate will sit in position by gravity. Take care not to over insert the plate into the crossmember as it can be tricky to fish back out.

TOOLS REQUIRED

FASTENERS

M12 Large Nut Plate



6. Fit the front mount, to the chassis, Secure in place using M12x120 Bolt, Crush Tube, Large flat washer and M12 flange nut, Fitted through the thru hole in the chassis rail, just behind the transmission crossmember.
7. Insert bolt from the inside of the vehicle and secure with nut on the outside.

TOOLS REQUIRED

- FASTENERS**
- M12x120 Bolt
 - M12 HD Flat Washer
 - Crush Tube
 - M12 Flange Nut



8. Secure the bottom of the front mount into the nut plate in the crossmember placed earlier using M12x30 Bolt and flat washer.
9. Take care to begin the thread without dislodging the nut plate, which is only sitting under gravity in the crossmember. Once thread is started, side of crossmember will prevent the nut plate from rotating.

TOOLS REQUIRED

FASTENERS
M12x30 Bolt
M12 Flat Washer



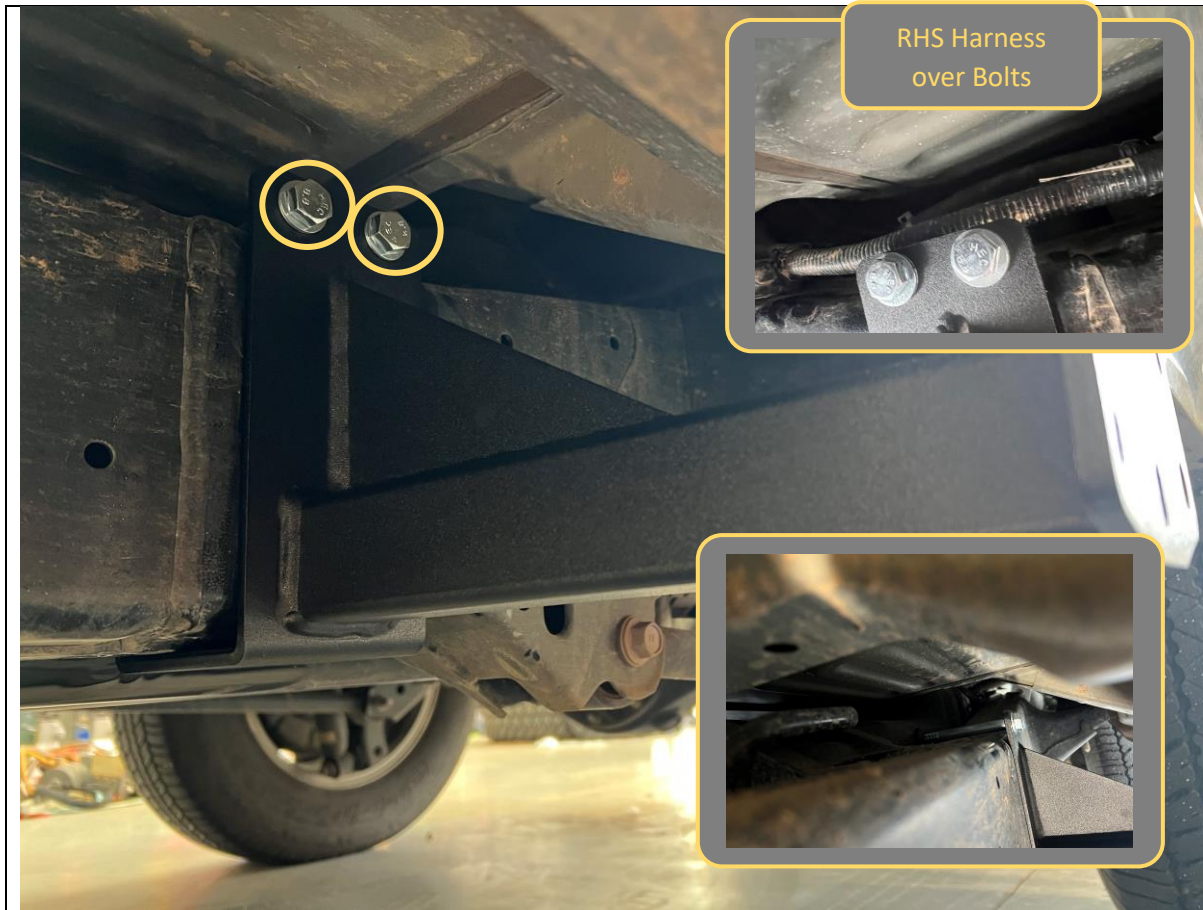
10. Pre bend M10 lollypop nut plate to approximate shape to reach final bolt position.
11. Insert lollypop nut plate through gap between chassis and crossmember.
12. Hold in position and secure with M10x40 bolt and Flat washer
13. Leave all bolts finger tight at this stage.

TOOLS REQUIRED

Patience

FASTENERS

M10x40 Bolt
M10 flat washer
M10 lollypop Nut Plate

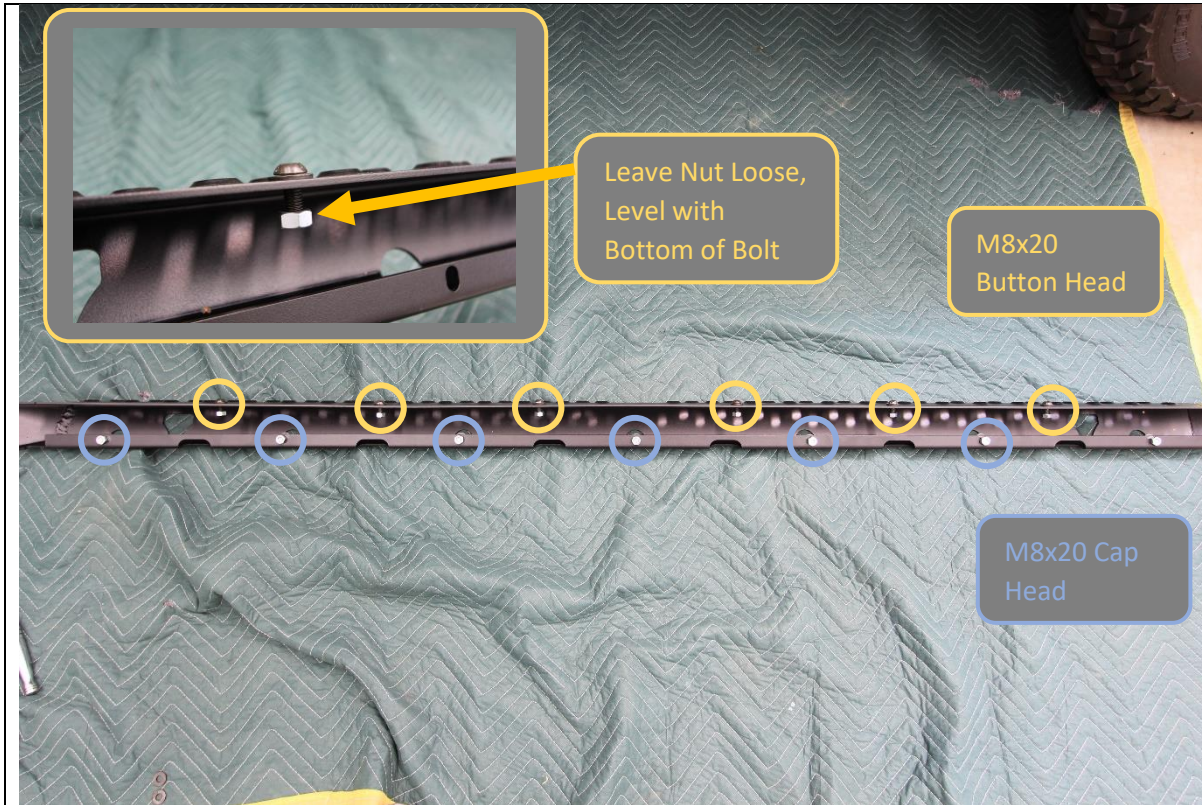


14. Fit rear mount to chassis, immediately in front of the rear control arm mounting points.
15. Secure with 2x M12x120 Bolts Flat washers and flange nuts.
16. It is possible to reach over the chassis rail to position the M12 nuts.
17. Leave bolts finger tight at this stage.
18. Fit Shim plate if required to ensure snug fit with chassis rail.
19. On RHS of vehicle ensure mount bolts go below the wiring harness that sits on top of the chassis rail.

TOOLS REQUIRED

FASTENERS

- 2x M12x120 Bolts
- 2xM12 Flat washers
- 2XM12 Flange nuts.



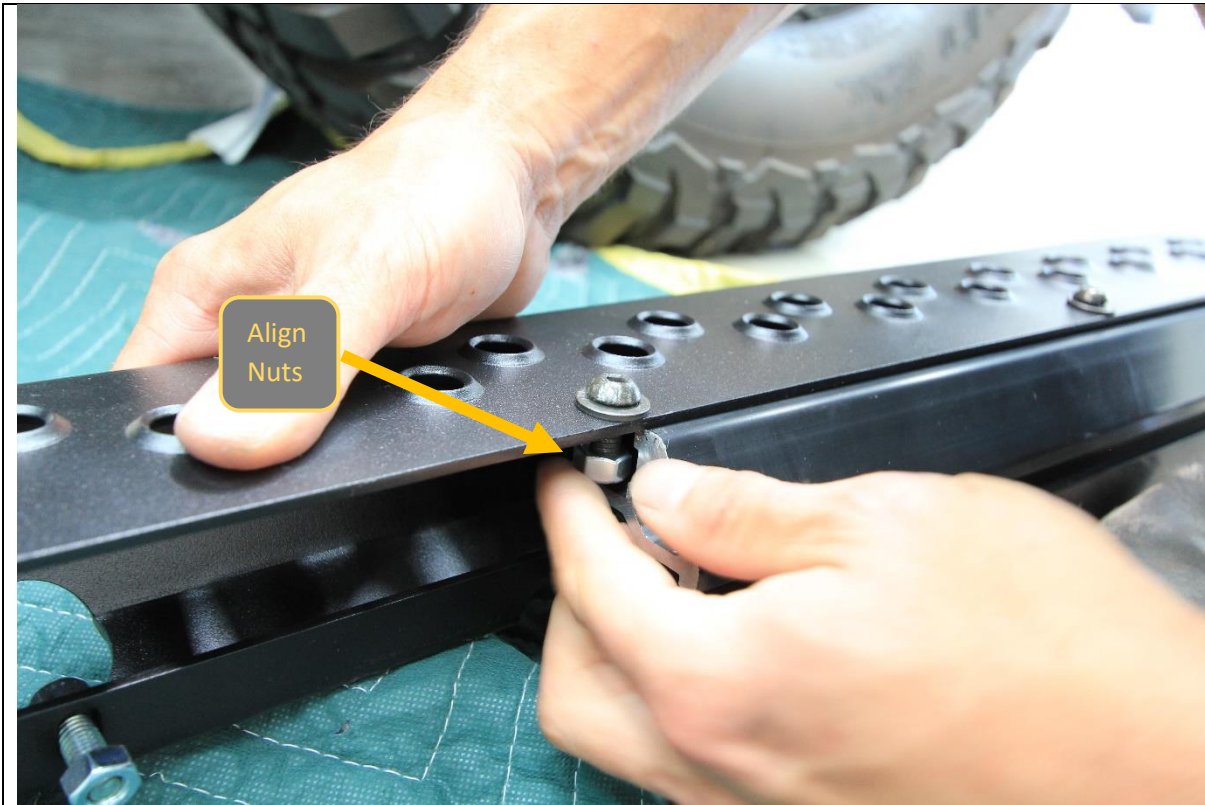
- 20. Prepare step plate by loosely pre fitting the fasteners to the step
- 21. Use M8x20 black button head screws, black M8 washers and M8 Nuts on 6x locations on top of step as shown
- 22. Use M8x20 cap head screws M8 washers and M8 nuts on 7x locations on bottom side of step.

TOOLS REQUIRED

FASTENERS

- 6x M8x20 Black Button Head
- 7x M8x20 Cap Head
- 13x M8 Black Washer
- 13x M8 Nut

NOTE THERE ARE 2 WAYS TO FIT THE STEP ON THE EXTRUSION, IF YOU FIND THIS WAY DIFFICULT SKIP STEP 19-23 AND GO TO STEP 24-29



23. Slide the step plate onto the main slider structural extrusion. Align the nuts as they enter the T Slots on the extrusion.
24. Center the Step on the extrusion, by measuring distance from extrusion to tip of step, and adjusting until both sides are equal.

TOOLS REQUIRED

FASTENERS



- 25. Lie extrusion down and place step on top
- 26. Feed nut into slot with something long and skinny (like a dowl or piece of all thread) Do centre ones first the move outwards

TOOLS REQUIRED

Long dowl or skinny stick

FASTENERS



27. Thread cap screws into each hole

TOOLS REQUIRED

6mm Allen Key

FASTENERS

M8 x 20 Cap screws (7)
M8 hex nuts (7)
M8 flat washers (7)



- 28. Flip entire slider up as shown
- 29. Clamp step hard to extrusion

TOOLS REQUIRED

Clamps

FASTENERS



30. Using long tool feed nuts in to centre first and thread in with black M8 button head cap screws and washers

TOOLS REQUIRED

5mm Allen key

FASTENERS

M8 x 20 BHCS black (8)

M8 hex nuts (8)

M8 flat washer black (8)



31. Fit Cage nut to square hole in top of end cap. Use a flat blade screwdriver to assist if required.
32. First slide 2x M10 Nuts into the T slots on back side of extrusion.
33. Fit end cap over these nuts.
34. Secure with M10x16 Button Head Screws into Nuts and M6x20 bolt in top, through tread plate. End cap should align with end of tread plate if tread plate is centered correctly.

TOOLS REQUIRED

Flat blade Screwdriver

FASTENERS

2x M10x16 Button Head
1x M6x20 Button Head
bolt
1xM6Flat Washer
2x M10 Nut
1x M6 Cage Nut



35. Slide the 8x M10x25 Hex bolts into the T slots on back side of extrusion. 6 bolts per slot.

36. Loosely arrange the bolts in 2x groups of 4, in approximate location of mounts, as shown.

TOOLS REQUIRED

FASTENERS

8x M10x25 Hex bolts



37. Fit mirrored end cap to remaining end of slider, using 2x M10x16 Button bolts and M6x20 Button head bolt with flat washer as per previous steps 34-36.

38. Check alignment of end caps, End cap should align with edge of tread plate if properly centered. Adjust end cap / tread plate position as required.

39. Once happy with alignment tighten all bolts on slider extrusion, using 5/6MM hex key.

TOOLS REQUIRED

5mm Hex key
6mm Hex key

FASTENERS

2x M10x16 Button Head
1x M6x20 Button Head bolt
1xM6 Flat Washer
2x M10 Nut



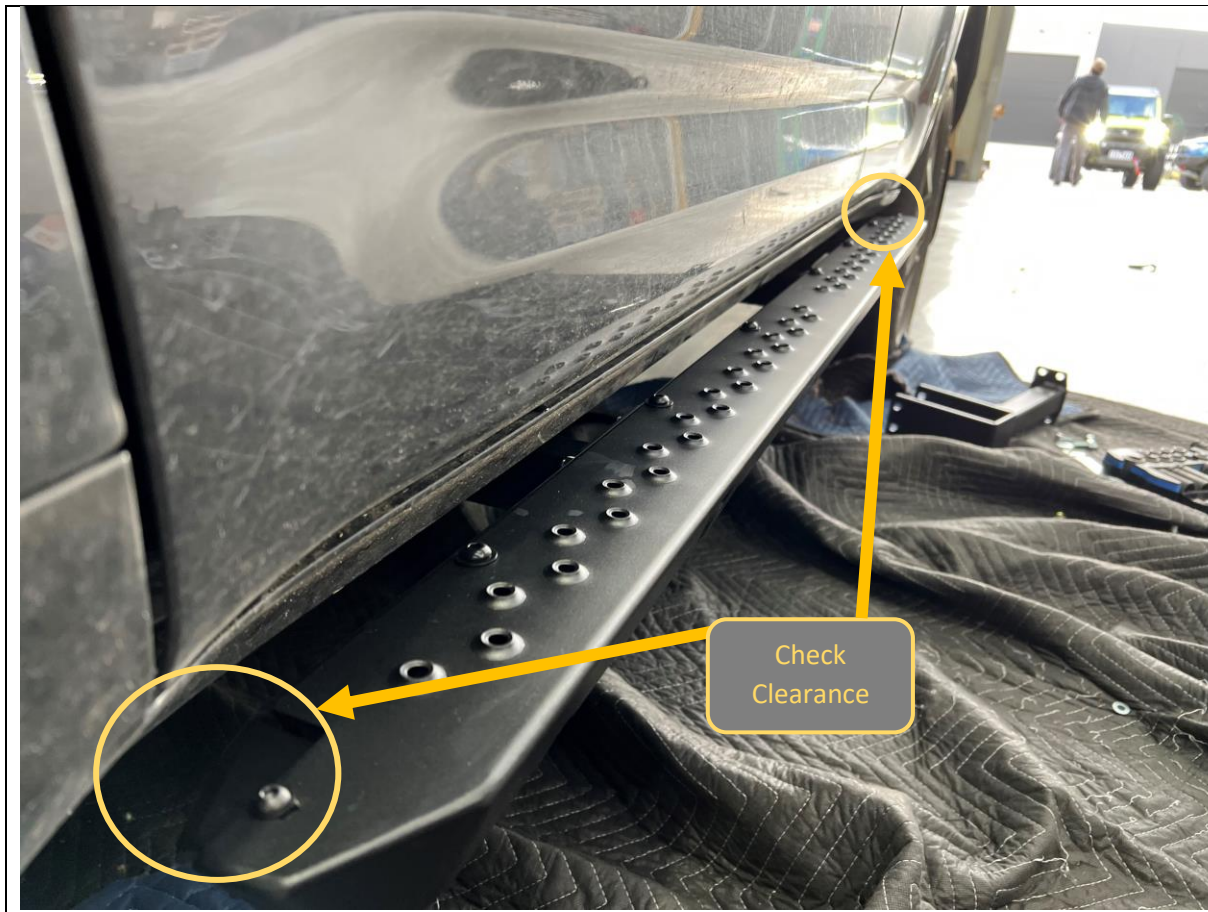
- 40. With Assistance from another person, or mechanical lifting aid such as a lift trolley, Lift the slider onto the mounts.
- 41. Manipulation of position of bolts in T slot to align with mounts will be required to get slider on. Secure with M10 Flange Nuts

TOOLS REQUIRED

- 5mm Hex key
- 6mm Hex key
- 15mm spanner

FASTENERS

- 8x M10 Flange Nut



<p>42. Adjust fore / aft position of sliders on mounts to achieve even appearance as required.</p> <p>43. Take care to ensure adequate clearance where panel curves toward wheel at front end, near end cap.</p>	<p>TOOLS REQUIRED</p>
	<p>FASTENERS</p>



- 44. Tighten all chassis mount bolts, on both front and rear mounts.
- 45. Adjust slider position on mount slots as required to achieve even position relative to body.
- 46. Tighten all mount to slider M10 flange nuts using 15mm spanner. A ratcheting spanner or socket makes this process easier

TOOLS REQUIRED
15,16,18mm Socket /
Spanner

FASTENERS



- 47. Fit the Offroad Animal logo plate to the small gap between pierced features on tread plate, using the pre applied double sided adhesive.
- 48. Complete the entire slider install again for the other side of the car.
- 49. After that you are done!

TOOLS REQUIRED

FASTENERS



Congratulations!
Head for the tracks and enjoy your newly protected Landcruiser!