



PROTECTION GUARD RIGHT HAND SIDE

TLR712504



SUITED TO:
TOYOTA LANDCRUISER 300 SERIES



PRE-INSTALLATION



Read through this installation guide before proceeding.



Fitting time is approx. 30 minutes.



Basic spanner and socket set, Allen keys, Torx set

FITTING KIT

| QUANTITY | PART |
|----------|---------------------------------|
| 1 | TLR712504 – Protection Guard |
| 2 | M4 x 10 mm SS Pan Philips Head |
| 2 | M4 SS Nyloc Nut |
| 1 | M6 x 12 mm SS Pan Phillips Head |
| 1 | M6 SS Nyloc Nut |

NOTE:

TLR Products Protection Guard requires installation of the TLR Products Toyota Landcruiser 300 series 3 plug Multi Accessory plug bracket (TLR712502).

The Protection Guard is designed to fit onto the main mounting bracket and wraps around the bottom of the plugs and accessories.





FITTING INSTRUCTIONS

1. This Protection Guard requires the TLR Products Multi Trailer Plug Bracket fitment to be completed before installation. *Note: if you already have the main bracket installed, we recommend removing this from the vehicle to make the installation easier.*
2. If you have an accessory mounted in the left position on the bracket, remove the mounting bolt on the left-hand side of this.
3. Fit Protection Guard into place on main bracket using the M4 and M6 hardware supplied, **Photo 1 and 2.** *NOTE: the left-hand side mounting flange mounts on the top side of the main bracket.*
4. Once you have the Protection Guard mounted to the main trailer plug bracket, fit assembled unit into place using the previously removed OEM mounting bolts. **Photo 3.**

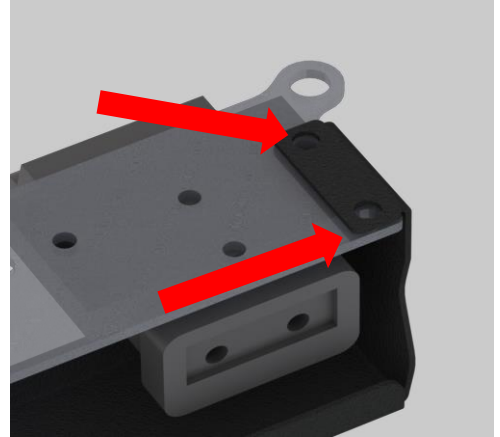


PHOTO 1

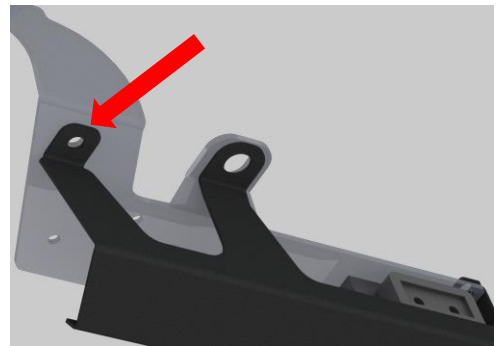


PHOTO 2

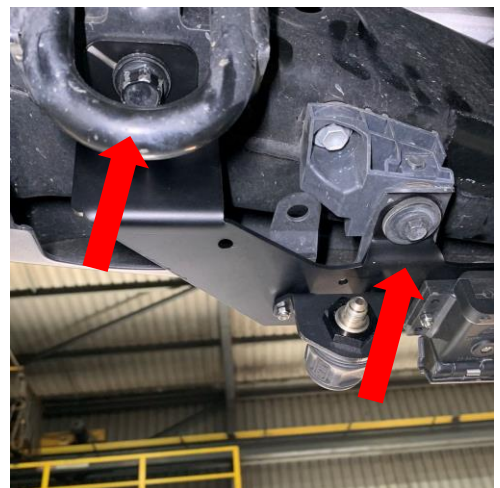


PHOTO 3



hello@tlrproducts.com.au
www.tlrproducts.com.au



instagram.com/tlrproducts
facebook.com/tlrproducts