

Installation Instructions Auto Folding P31(A-B) Mirror Module

TRAC

ELECTRONICS

Email: info@tracelectronicis.com.au

Website: <https://tracelectronics.com.au>

Models # P31 (D-Max) P31A, (BT-50) & P31B (MU-X)

January 2024

Suitable for the 3rd Generation Isuzu D-Max and Mazda BT-50 models MY21 - onward

And 2nd Generation Isuzu MU-X models MY21 - onward

Module Function: Lock doors using key remote or button on front doors, both mirrors fold in, unlock doors using key remote or button on front doors both mirrors fold out. Mirror switch on armrest operates normally when ignition is on.

Models with proximity locking the mirrors will also fold in when the vehicle automatically locks.

The module can be configured to unfold the mirrors when the vehicles is unlocked or when the ignition is on

The default is mirrors will unfold when the vehicle is unlocked.

To change to unfold only when the vehicles ignition is turned on, cut (at any point) and isolate both ends of the grey wire on the modules harness.



System includes:

- Mirror Module
- Harness with direct plug & play connectors
- Adhesive pad (hook & loop) to attach module to inside of door panel (card)

Additional tools required:

- Phillips screwdriver (PH1)
- Trim tool

NOTE: This module is only suitable for vehicles fitted with factory fitted electric folding mirrors. If your vehicle does not have factory fitted electric folding mirrors the module will **NOT** function.



NOTE: Read full instructions before commencing installation.

Installation Instructions Auto Folding P31(A-B) Mirror Module

First test the existing electric mirror function before starting this installation.

1. Turn on the ignition
2. Press the auto fold button located on driver's side armrest above the window switches if operating correctly both mirrors will fold in, press the button again they should completely fold out. If they do not function in this way, then the module will not operate correctly. Do not proceed with installation until they operate accordingly
3. Lower driver's side window completely
4. Turn off ignition.

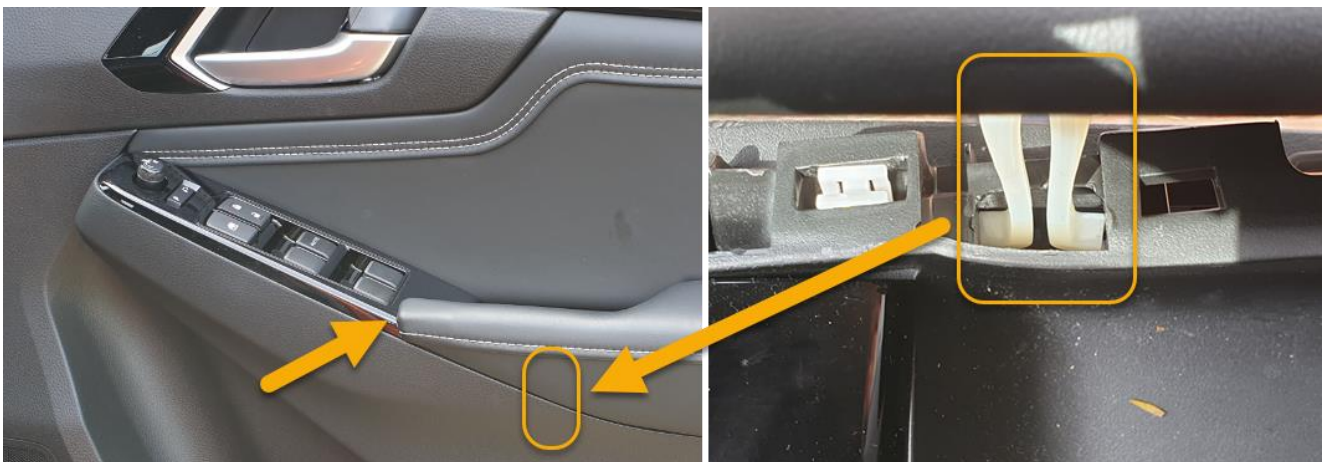
Quarter Panel removal:

- Remove the small plastic plug (unscrews) then pulls completely out
- Using a trim tool dislodge the clip (location shown by arrows in below images)
- The quarter panel can now be completely removed.

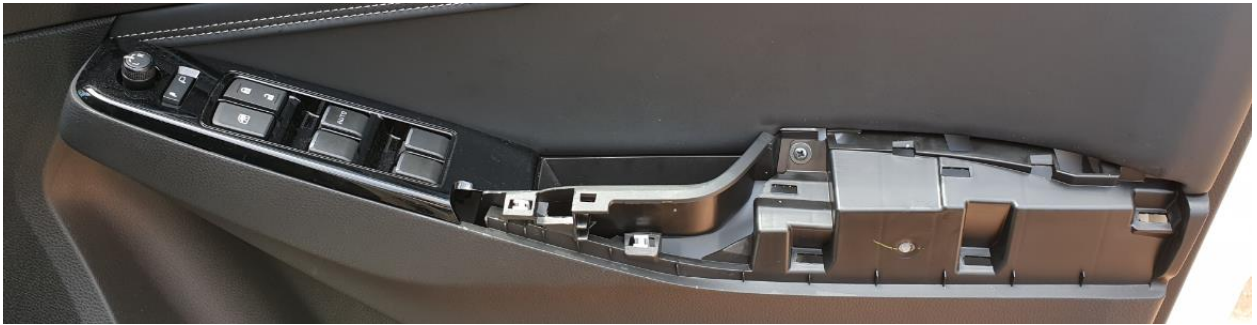


Padded armrest removal:

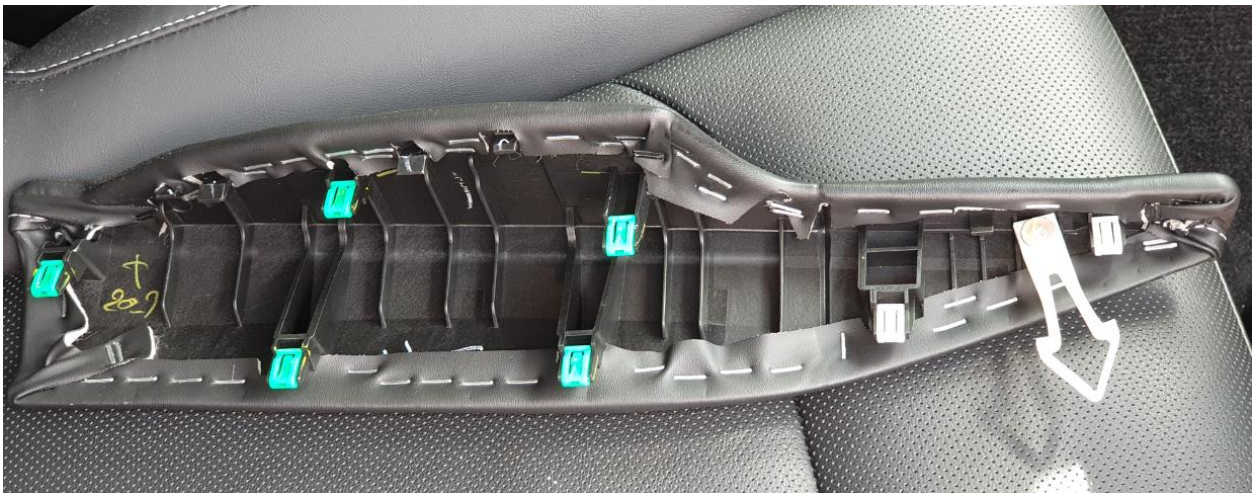
- Insert a trim tool between the start of the padded armrest and window switch fascia then work your way along to release the first two white clips
- In between these two white clips is a retaining tab that needs to have both supports depressed inwards to be able to completely remove, once removed continue working your way down the armrest to dislodge the remaining five green clips



Installation Instructions Auto Folding P31(A-B) Mirror Module



- Remove any clips left in the door panel and place back into position on the armrest.



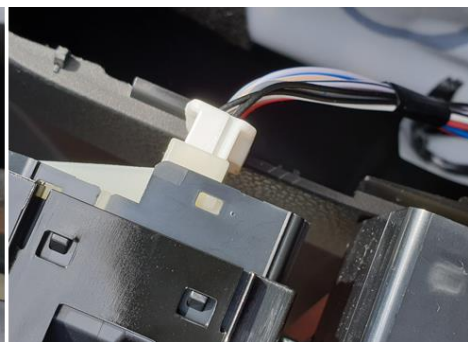
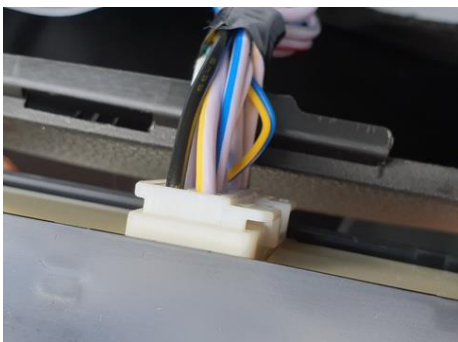
Window switch assembly removal:

- Start by inserting a trim tool between the back of the window switch fascia and door panel, then working your way forward up the full length to completely dislodge the window switch fascia from the door panel
- The front of the switch fascia has a retaining lug holding it into position, so lift the switch fascia from the rear in an upwards arc to dislodge

Installation Instructions Auto Folding P31(A-B) Mirror Module

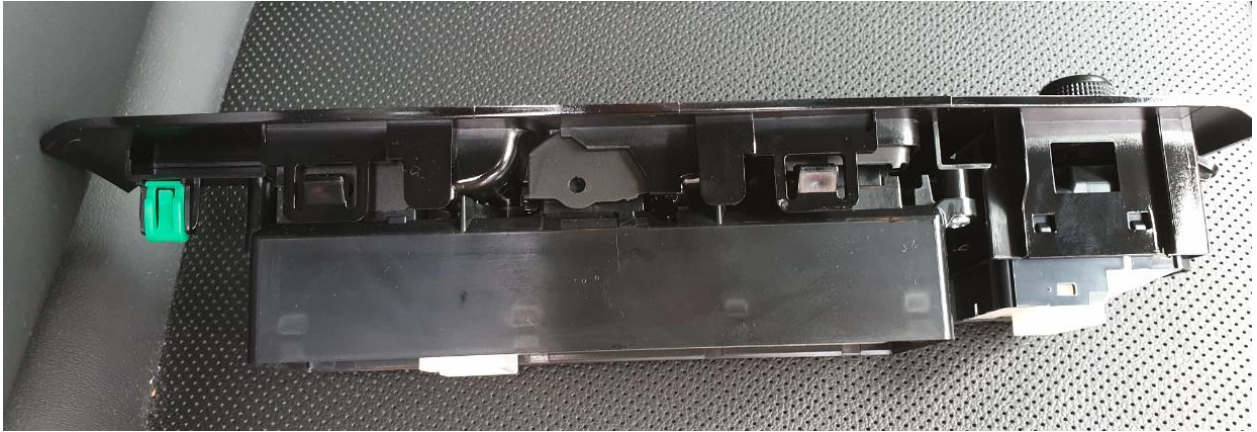


- The switch fascia assembly can now be pulled out and turned upside down to gain access to the two connectors



- To remove the connectors from the underside of the switch assembly, push the tabs inwards and then remove.

Installation Instructions Auto Folding P31(A-B) Mirror Module



Door panel (card) removal:

For D-Max / MU-X owners:

1. Remove the cover under the door latch using the provided trim tool to gain access to the single Philips screw (PH1)



For BT-50 owners the following two additional steps are required:

1. First remove the large silver fascia by inserting the trim tool under it and working your way around the outer edges to dislodge, it's held in place by a number of clips
2. Then remove the cover under the door latch using a trim tool to gain access to the single Philips screw (PH1)

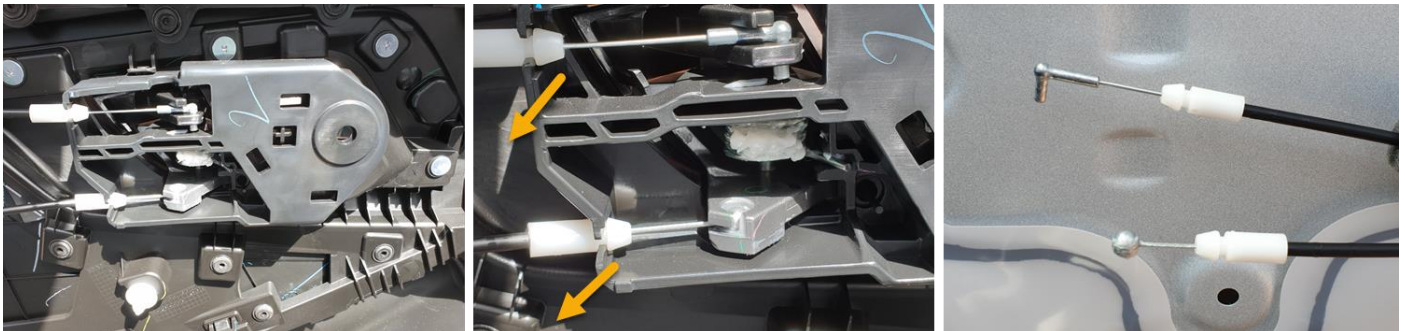


Installation Instructions Auto Folding P31(A-B) Mirror Module

- The two (larger) Phillip's screws from under the armrest and switch fascia for all models can be removed



- Remove the door panel by pulling away from the door frame, starting just above the speaker and work your way down around the bottom of the door and up the right-hand side then on the left side
- The door card needs to be lifted off the door seal. **NOTE:** If the entire door seal is removed with the door card, take it off the door card and replace back onto the top of the door frame
- Disconnect the two cables – lock and door release by first unclipping the white retaining fastener, then removing them from their respective fixtures.



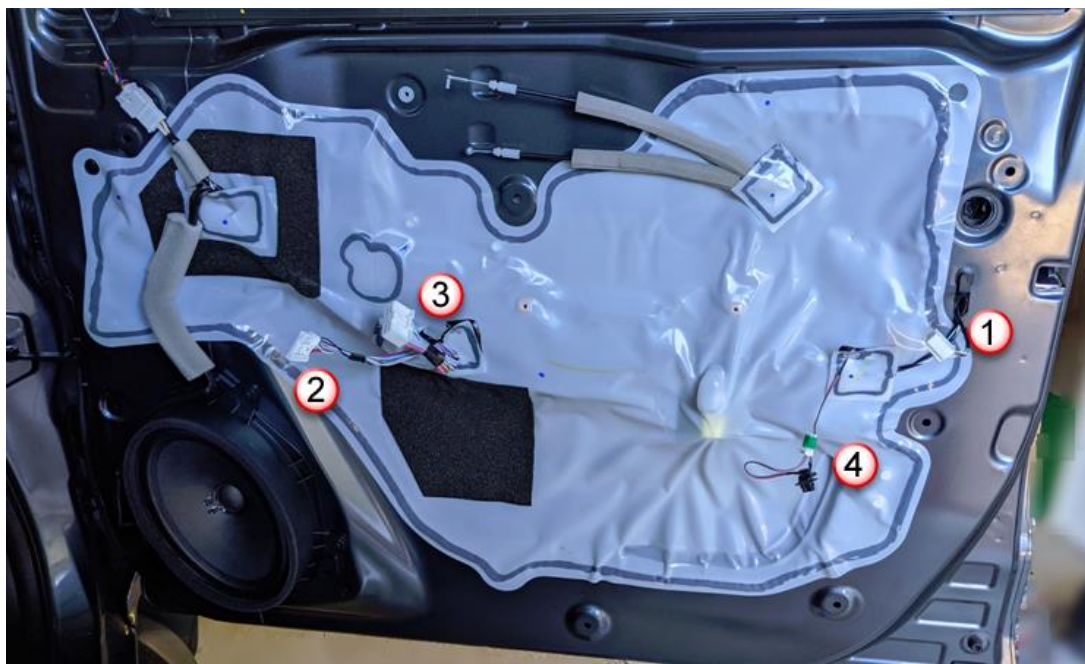
For MU-X owners the following two additional steps are required:

1. Remove the ambient lighting retaining clip from the back of the door card it needs to be rotated 90 degrees to remove it from the panel. **NOTE:** For MU-X models that do not have ambient lighting the connector is taped to a retaining clip on the door card
 2. Disconnect the ambient lighting two pin connector.
- The door card can now be put aside, if any plastic clips have remained in the door panel remove them now and place back into their respective positions on the door card.

Wiring harness installation:

1. Central locking connector
2. Mirror connector
3. Window switch connector
4. Ambient lighting connector (MU-X models only)

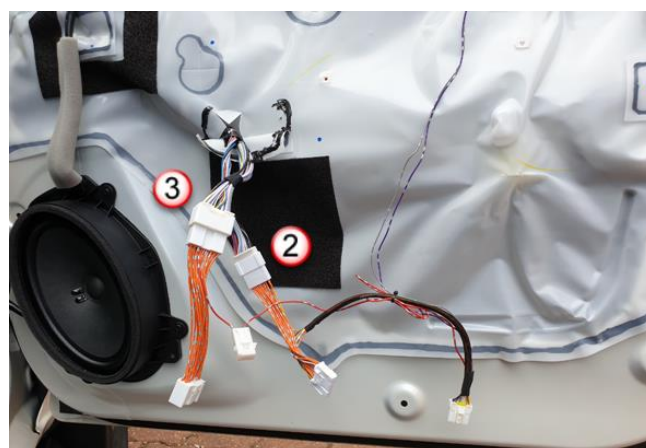
Installation Instructions Auto Folding P31(A-B) Mirror Module



- Remove the factory Central locking connector (1) by depressing the locking tab inward and pulling completely out
- Connect the patch harnesses to the factory connectors as shown
- Cable tie in position **NOTE:** If this connector is not positioned as shown it may obstruct the door card upon re-fitment
- Route the two wires grey & purple above the control cables and affix to one with a cable tie



- Connect the module mirror patch harness (2) to the factory mirror connector
- Connect the module window patch harness (3) to the factory window connector.



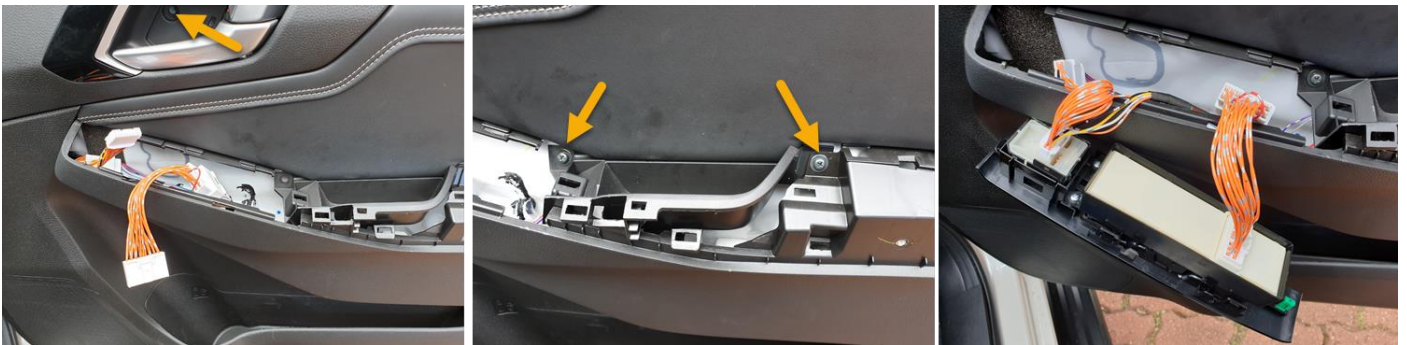
Installation Instructions Auto Folding P31(A-B) Mirror Module

Reassembly:

- Attach the hook and loop adhesive pad to the back of the module
- Fit the sixteen-pin connector to the mirror module
- Attach the mirror module to the back of the door panel just below the armrest
- Feed the two module patch harnesses out through the front of the door card ready for the switch to be fitted
- Refit the door release and lock cables into their respective fixtures **NOTE: Ensure they are both securely locked back in place**
- **For MU-X models refit the ambient light connector**



- Position the door card on top of the door seal first and then locate all the clips into their respective positions then working your way around the door card, pushing them all back into place, **then with the door still open test the door latch and door lock to ensure they are both working correctly**
- Refit the three Phillips screws, putting the smaller one behind the door handle and two larger in the armrest
- Fit the window switch assembly to the corresponding connectors of the module patch harness



- Position the window switch fascia front end first so it engages the locating lug and lower back into place

Installation Instructions Auto Folding P31(A-B) Mirror Module



- Ensure all cables and connectors are not positioned to obstruct the switch assembly from fitting correctly, if any obstructions are placed on the switch connectors this may affect the operation of the switches.

Test:

- Test mirror and all window operation before continuing
- Ensure the auto fold button located on driver's side armrest is in the off position (mirrors extended)
- Close **all doors** and lock, both side mirrors will fold in
- Unlock, both side mirrors will fold out (default setting)
- If mirrors do not function correctly remove switch fascia assembly and retest, if still not functioning remove door card and check all connections and fuse.

NOTE: The Auto window function for the driver's side window may need to be reprogrammed.

Lower the window down halfway then hold driver's window switch up, once fully closed hold for an additional two seconds to reprogram (this information is also contained within your owner's manual).

- Refit the padded armrest by first aligning the large white tab under the padded armrest back into position
- Align the clips of the padded armrest into the door panel and press them all back into place
- Refit the plastic cover behind the door handle.
- **For BT-50 owners** replace the large silver fascia back into place.

Quarter Panel fitment:

- Align the clip into the door frame and push back into place
- Refit the plastic screw, it can be pushed back into place.

Installation Instructions Auto Folding P31(A-B) Mirror Module



Your feedback on these installation instructions is welcome, if you believe there is additional information required, or incorrect please contact us at info@tracelectronics.com.au

Copyright ©2022 Trac Electronics all rights reserved the publication of these instructions in any form including images is not permitted without prior written consent from Trac Electronics Pty Ltd.